

RE-DEFINE  
THE SURFACE

**GENIO**

 **DPM Link**

17870 CASTLETON STREET, SUITE 265, CITY OF INDUSTRY, CA 91748

Tel 626-474-2939 Web [www.dpmlink.com](http://www.dpmlink.com)

**GENIO**

**INTERIOR FILM**

# ARCHITECTURAL DESIGN FILM

SOLID  
PREMIUM MATT  
METAL  
STONE & MARBLE  
FABRIC & LEATHER  
WOOD

**GENIO**

RE-DEFINE THE SURFACE



[WWW.DPMLINK.COM](http://WWW.DPMLINK.COM)





# INSTALLATION GUIDE

- (1) Preparation**
- Before applying interior films, the surface condition of where to be applied must be checked for a proper installation.

MDF	Please use densely homogenous MDFs, this enhances adhesion and fire retardant performance.
Iron plate (Aluminum, iron, etc.) steel	Remove contaminants such as oil on the surface with solvents such as alcohol, check for damage to the surface due to solvents, treat irregularities and welding areas with filler and remove any foreign matter with wallpaper scrapers, sandpapers etc. and then clean area with the lint-free cloth and cleaning brushes.
Ready-made products	Depending on the surface condition, the primer must be used to prevent shrinkage and dropout, and the surface must be checked prior to the installation.

- Before installation, inspection of the product selected by the consumer (product name, pattern, appearance status) must be re-checked in advance.
- Installation work must be conducted after inspection of all preparation works done, this includes the coating, painting and sealant process of any woodwork or porous substrates.
- For a stable working environment, check the humidity of the construction site and keep the room temperature at 15°C to 25°C if possible.
- The across section - overlapping area (cutting area) of the surfaces (MDF, etc.) where the film will be applied must be sufficiently cleaned or polished with sandpapers. The condition of the wood surface (particularly the edges) is rough, it must be polished with sandpapers or applied after filler treatment.

- (2) Primer Treatment**
- Apply a sufficient primer to the surface of the substrate (MDF, PB, etc.) 1-2 times.  
Since the cutting(slit) surface of the wood has a high absorption rate and uneven surfaces, the primer should be fully applied 2-3 times.
  - Primers will need approximately 2 hours drying time. It is advised and recommended that you check the substrate and thoroughly dry and clean prior to installation.

- (3) Installation Film**
- Once the primer surface is dry enough, make the surface smooth and overlapping section is needed to be cleaned with sandpapers and remove residue with a lint-free cloth and make sure area is completely dust free.
  - Surface treatment by using sandpapers is required and make sure the surface is clean before applying primer to enhance adhesion performance.
  - Please make a pressure using by felt or hera(spatula), rubbing with hard pressure may work to strengthen the adhesion 2-3 times.
  - Do not wrap forcefully when applying on the MDFs. The heat generated during application can cause the distortion of the surface.

**(4) Specific Product Instructions**

<b>SC/SE (man-made leather type)</b>
<ul style="list-style-type: none"> <li>• <b>Do not overlap due to the embossed depth and please apply Solvent Type Primer to press firmly.</b> In order to maximize the visual effect of the product, it is necessary to check the type and condition of the surfaces and remove all residues prior to installation. Do not rub too hard.</li> </ul>
<b>SP</b>
<ul style="list-style-type: none"> <li>• To enlarge the design effect, the film is too soft on the top. Please do not rub too hard.</li> </ul>
<b>JG/JF</b>
<ul style="list-style-type: none"> <li>• JG/JF is specially processed using aluminum, detachment of where film lines are overlapped can cause peeling of film's surfaces, so pay attention to installation.</li> </ul>
<b>PREMIUM MATT LINE UPs, SOFT MATT (Soild)</b>
<ul style="list-style-type: none"> <li>• As being treated with a special process on the surfaces, it feels initially not sticky enough in the overlapped parts, but being fully pressed adhesive parts will be stabilized stronger over time. (Method when contaminated: Wipe with an alkaline alcohol to remove.)</li> </ul>

- (5) Product Storage and Precautions**
- Please avoid moisture and direct sunlight, and please do not use it outdoors.
  - The surface may become discolored during prolonged exposure to sunlight or ultraviolet light.
  - It is recommended that correct storage temperatures are used for storing the product to be free from long term storage defects. (15°C to 25°C)
  - When installing the film, please use the manufacturer's recommended products.

- Unauthorized reproduction and use of content published in this sample book is prohibited.
- The colors of the products listed in the sample book may differ from the actual product.



# CONTENTS

## SOLID

- 7 PASTEL COLORS
- 8 BASIC SOLID
- 9 TRENDY SOLID/TEXTURE
- 10 SOFT MATT
- 12 EMBOSS PATTERN
- 13 PEARL WOOD
- 14 PAINTED WOOD

## PREMIUM MATT

- 17 PREMIUM WOOD
- 37 PREMIUM STONE
- 43 PREMIUM FABRIC
- 47 PREMIUM METAL

## METAL

- 51 PEARLESCENT METAL
- 53 HAIR LINE BRONZE METAL
- 54 METAL

## STONE & MARBLE

- 57 STONE
- 62 MARBLE

## FABRIC & LEATHER

- 65 FABRIC
- 67 LEATHER

## WOOD

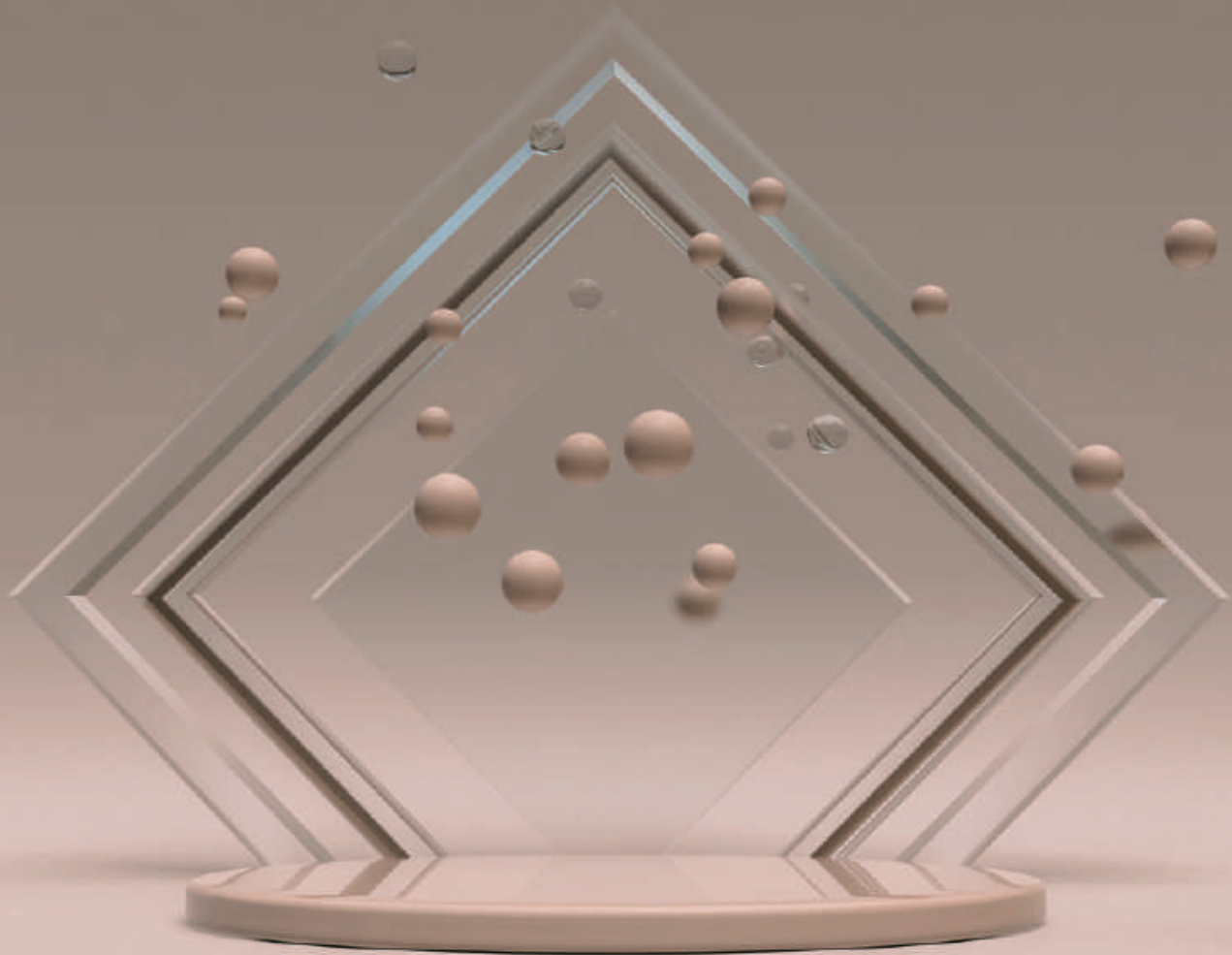
- 69 MULTI PRINTING WOOD
- 80 M SERIES
- 82 N SERIES
- 86 S SERIES

## OTHERS

- 95 VERSA-TILE

# SOLID

Simple but modern, it's a colorful solid for the space. From basic solids with color, embossed products with new embosses in a variety of color, to changes in the painted range for a more diverse blend of color. Solids are now enriched by new colors and ranges.





## PASTEL COLORS

Fire Retardant ● | Standard Range ● | NEW NEW



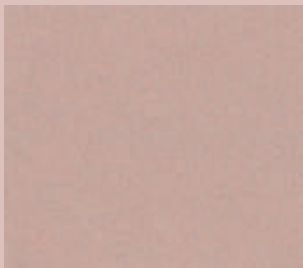
NEW NG/NF 2038 ●●  
Pale yellow



NEW NG/NF 2037 ●●  
Mint green



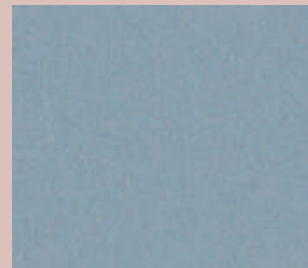
NEW NG/NF 2039 ●●  
Lilac



NEW NG/NF 2040 ●●  
Baby pink



NEW NG/NF 2042 ●●  
Racing green



NEW NG/NF 2041 ●●  
Baby blue

Pastels and pastel tones can be a beautiful addition to any space and are especially gorgeous when used together. Beyond the noise, get ready for a world where pastels are the most stylish palette in town.

**SOLID**  
BASIC SOLID

방염 ● | 비방염 ● | 신제품 NEW

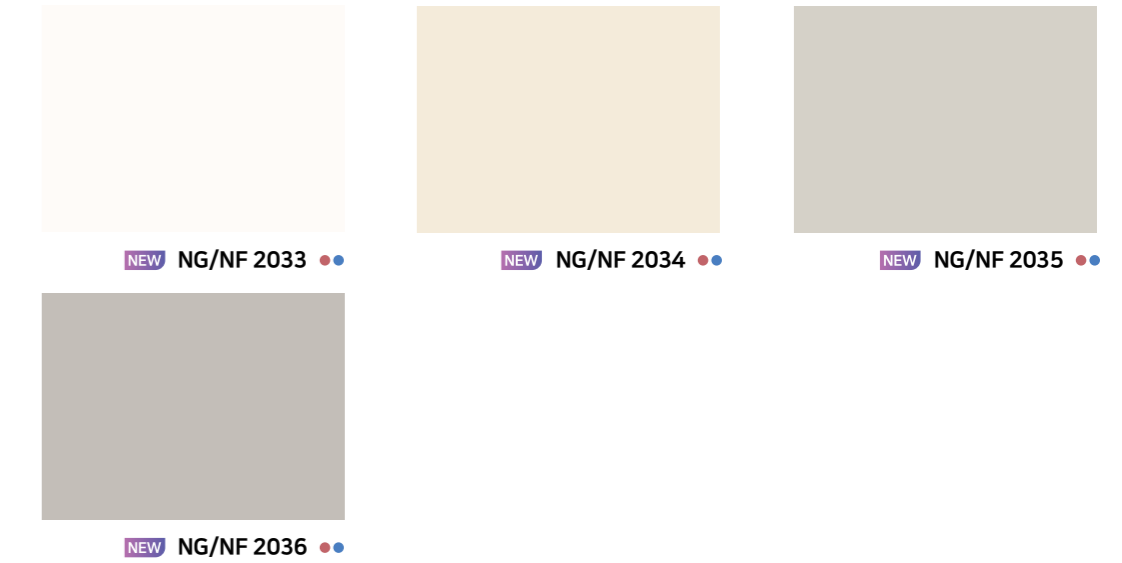


**SOLID**  
BASIC SOLID

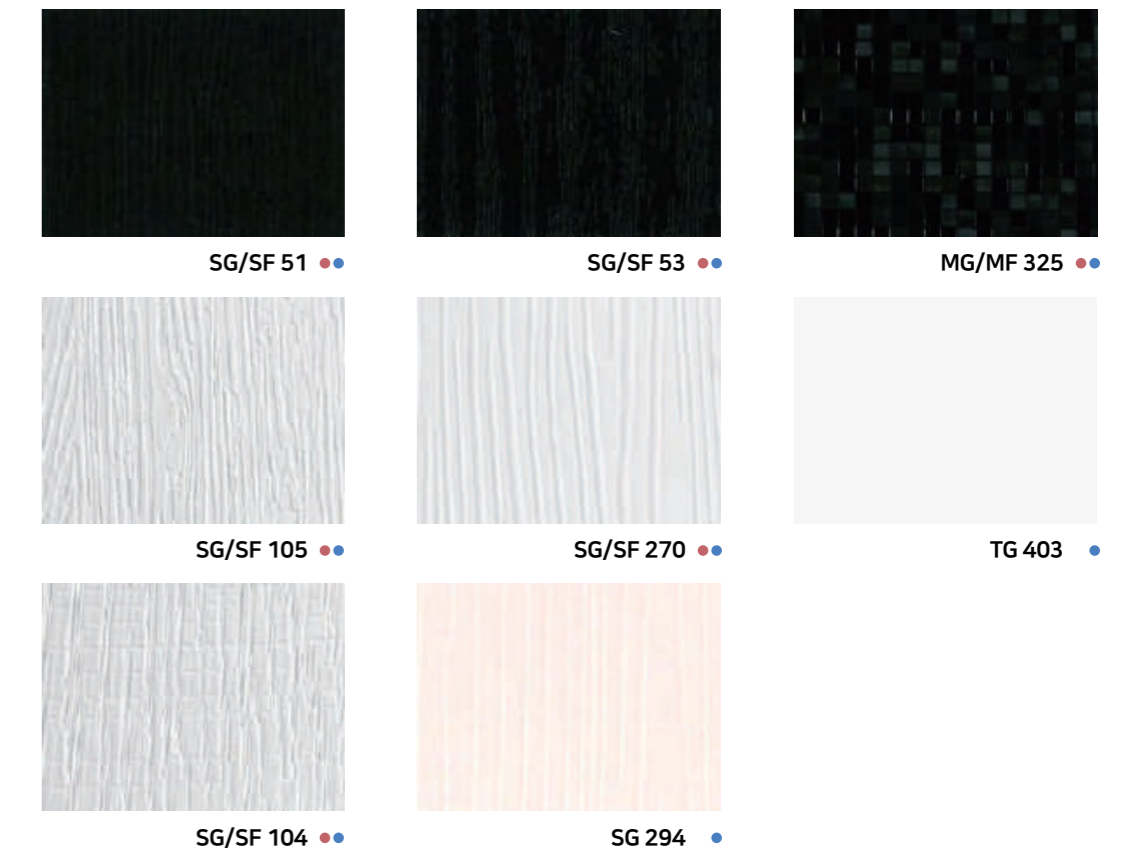
Fire Retardant ● | Standard Range ● | NEW NEW



**SOLID**  
TRENDY SOLID



**SOLID**  
TEXTURE



# SOFT MATT

방염 ● | 비방염 ● | 신제품 **NEW**

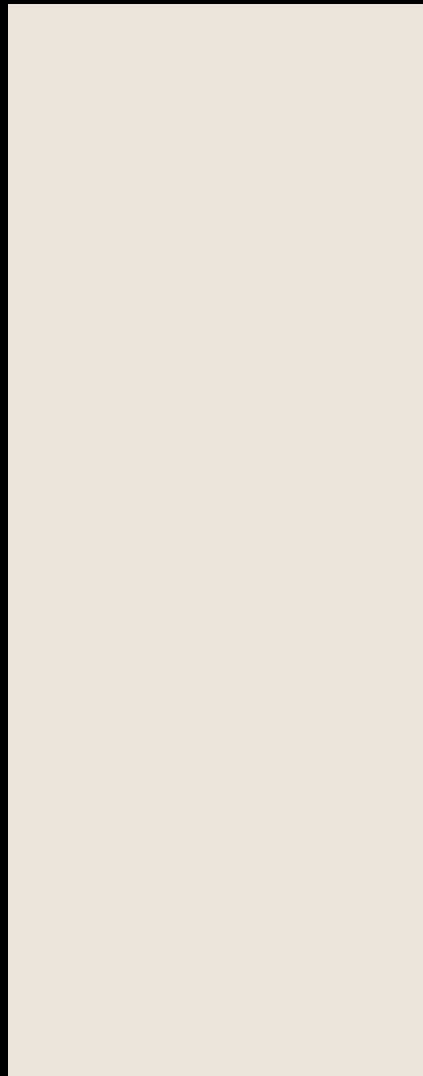
표면 특수코팅으로 부드러운 질감과 고급스러운 무광표현이 가능하고 NON-SCRATCH기능과 페인팅 기법을 통해 단색의 편안함을 극대화한 프리미엄 제품입니다.



Soft Matt **NEW** TG/TF 4025 ●●



Soft Matt **NEW** TG/TF 4028 ●●



Soft Matt TG/TF 4018 ●●



Soft Matt **NEW** TG/TF 4026 ●●



Soft Matt **NEW** TG/TF 4029 ●●



Soft Matt **NEW** TG/TF 4027 ●●

※ 제품표면이 특수가공 처리된 제품으로 겹침 시공시 잘 붙지 않는 느낌이 있으나 충분히 눌러주어 압착되면 시간이 지날수록 접착면이 안정화됩니다.

# SOFT MATT

Fire Retardant ● | Standard Range ● | NEW **NEW**

Premium product that allows of smooth texture and luxurious matt display with special coatings on the surface, and maximizes monochromatic comfort through NON-SCRATCH function and painting techniques.



Soft Matt TG 4024 ●



Soft Matt TG/TF 4021 ●●



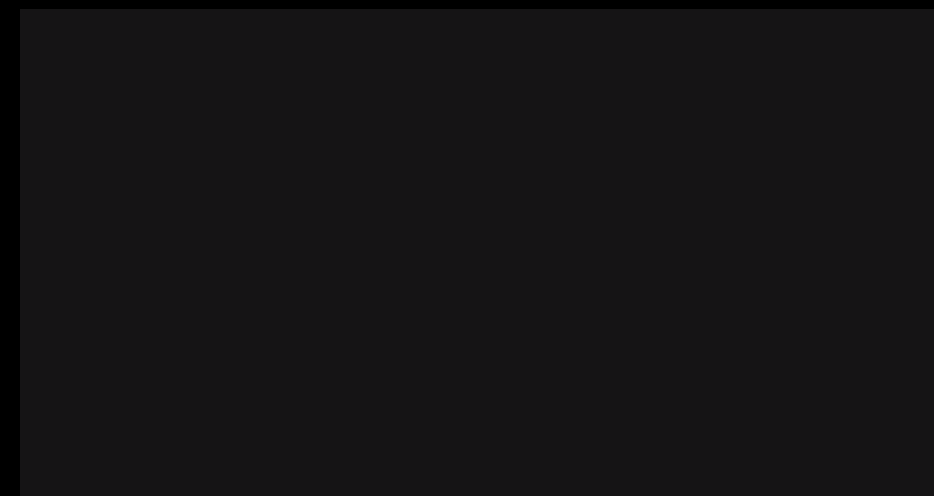
Soft Matt TG 4019 ●



Soft Matt TG/TF 4020 ●●



Soft Matt TG/TF 4022 ●●



Soft Matt TG/TF 4023 ●●

※ As being treated with a special process on the surfaces, it feels initially not sticky enough in the overlapped parts, but being fully pressed adhesive parts will be stabilized stronger over time.



**SOLID**  
EMBOSS PATTERN

방염 ● | 비방염 ● | 신제품 **NEW**



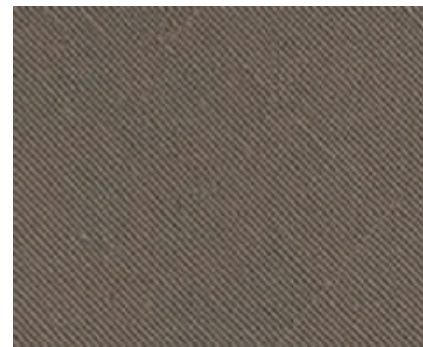
Emboss Pattern **MG/MF 3071** ●●



Emboss Pattern **MG/MF 3073** ●●



Emboss Pattern **DG/DF 3508** ●●



Emboss Pattern **DG/DF 3509** ●●



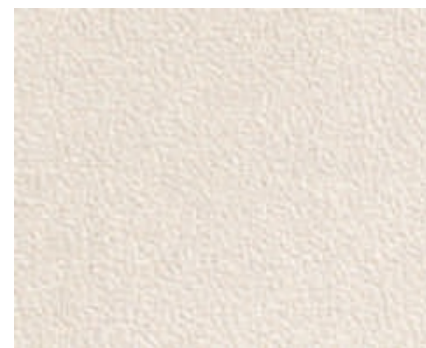
Painted Wood **NG/NF 2026** ●●



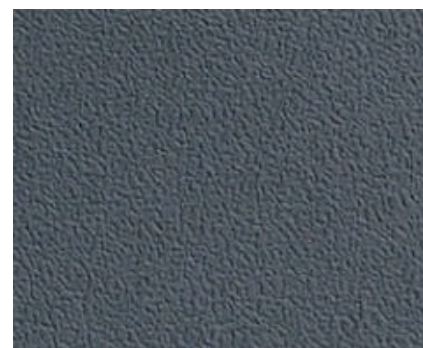
Painted Wood **NG 2028** ●



Emboss Pattern **NG/NF 2029** ●●



Emboss Pattern **NG/NF 2030** ●●



Emboss Pattern **NG/NF 2031** ●●

**SOLID**  
PEARL WOOD

Fire Retardant ● | Standard Range ● | NEW **NEW**



Pearl Wood **MG/MF 3050** ●●



Pearl Wood **MG 50** ●



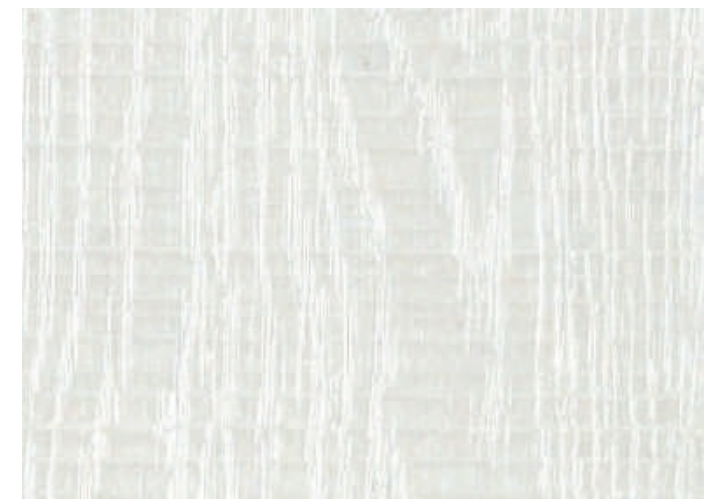
Pearl Wood **TG 433** ●



Pearl Wood **MG 3051** ●



Pearl Wood **MG 466** ●



Pearl Wood **MG 496** ●



**SOLID**  
PAINTED WOOD



**SOLID**  
PAINTED WOOD

방염 ● | 비방염 ● | 신제품 NEW



**SOLID**  
PAINTED WOOD

Fire Retardant ● | Standard Range ● | NEW NEW



**SOLID**  
PAINTED WOOD





# PREMIUM WOOD

Premium matt are specially designed for surfaces. Soft texture and luxurious matt display. Through NON-SCRATCH functions and painting techniques, Premium products maximize luxury.

HG/HF 5113

The images are for illustrative purposes and may differ from actual product.

## PREMIUM MATT WOOD

방염 ● | 비방염 ● | 신제품 NEW

손끝으로  
만져보세요!



Primary Oak

NEW HG/HF 5113 ●●

※ 제품표면이 특수가공 처리된 제품으로 겹침 시공시 잘 붙지 않는 느낌이 있으나 충분히 눌러주어 압착되면 시간이 지날수록 점착면이 안정화됩니다.



**PREMIUM MATT**  
WOOD

방염 ● | 비방염 ● | 신제품 **NEW**



Primary Oak

**NEW** HG/HF 5112 ●●



Primary Oak

**NEW** HG/HF 5114 ●●

상기 이미지는 이해를 돕기 위한 연출 이미지로 실제 제품과 다를 수 있습니다.

※ 제품표면이 특수가공 처리된 제품으로 겹침 시공시 잘 붙지 않는 느낌이 있으나 충분히 눌러주어 압착되면 시간이 지날수록 접착면이 안정화됩니다.

**PREMIUM MATT**  
WOOD

Fire Retardant ● | Standard Range ● | **NEW** **NEW**



Oak

**NEW** HG/HF 5106 ●●



Oak

**NEW** HG/HF 5107 ●●

※ As being treated with a special process on the surfaces, it feels initially not sticky enough in the overlapped parts, but being fully pressed adhesive parts will be stabilized stronger over time.



**PREMIUM MATT**  
WOOD

방염 ● | 비방염 ● | 신제품 **NEW**



Rainy Teak

**NEW** HG/HF 5108



Rainy Teak

**NEW** HG/HF 5109

※ 제품표면이 특수가공 처리된 제품으로 겹침 시공시 잘 붙지 않는 느낌이 있으나 충분히 눌러주어 압착되면 시간이 지날수록 접착면이 안정화됩니다.



HG/HF 5108

상기 이미지는 이해를 돕기 위한 연출 이미지로 실제 제품과 다를 수 있습니다.



**PREMIUM MATT**  
WOOD

방염 ● | 비방염 ● | 신제품 **NEW**



Oak

**NEW** HG/HF 5110 ●●



Oak

**NEW** HG/HF 5111 ●●

※ 제품표면이 특수가공 처리된 제품으로 겹침 시공시 잘 붙지 않는 느낌이 있으나 충분히 눌러주어 압착되면 시간이 지날수록 접착면이 안정화됩니다.



HG/HF 5110

상기 이미지는 이해를 돕기 위한 연출 이미지로 실제 제품과 다를 수 있습니다.



# PREMIUM MATT

## WOOD

방염 ● | 비방염 ● | 신제품 NEW



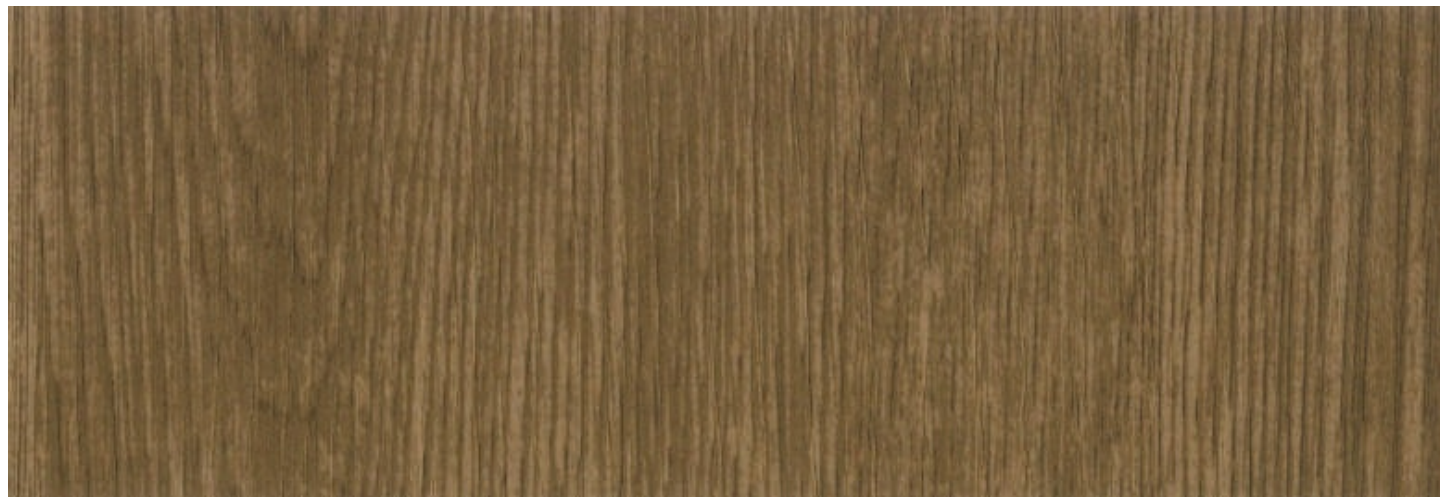
Ash

CG/CF 5503 ●●



Ash

CG/CF 5504 ●●



Ash

CG/CF 5505 ●●

※ 제품표면이 특수가공 처리된 제품으로 겹침 시공시 잘 붙지 않는 느낌이 있으나 충분히 눌러주어 압착되면 시간이 지날수록 접착면이 안정화됩니다.



CG/CF 5505

상기 이미지는 이해를 돕기 위한 연출 이미지로 실제 제품과 다를 수 있습니다.



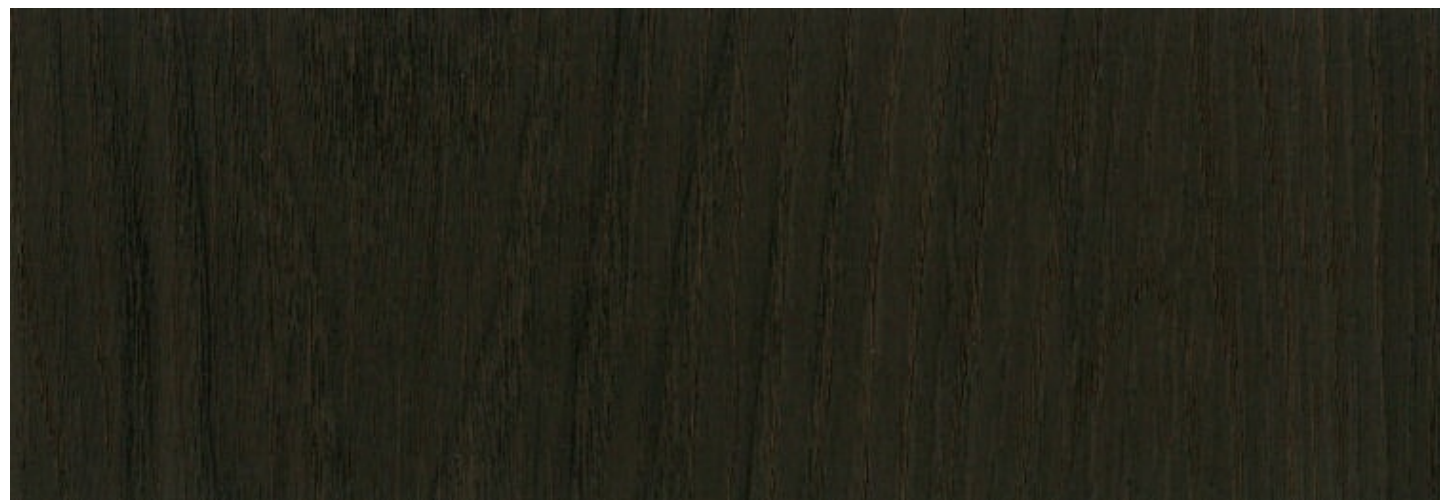
**PREMIUM MATT**  
WOOD

방염 ● | 비방염 ● | 신제품 **NEW**



Ash

CG/CF 5506 ●●



Ash

CG/CF 5507 ●●



상기 이미지는 이해를 돕기 위한 연출 이미지로 실제 제품과 다를 수 있습니다.

※ 제품표면이 특수가공 처리된 제품으로 겹침 시공시 잘 붙지 않는 느낌이 있으나 충분히 눌러주어 압착되면 시간이 지날수록 접착면이 안정화됩니다.

**PREMIUM MATT**  
WOOD

Fire Retardant ● | Standard Range ● | NEW **NEW**



The images are for illustrative purposes and may differ from actual product.



Classic Oak

CG/CF 5532 ●●



Classic Oak

CG/CF 5533 ●●

※ As being treated with a special process on the surfaces, it feels initially not sticky enough in the overlapped parts, but being fully pressed adhesive parts will be stabilized stronger over time.



**PREMIUM MATT**  
WOOD

방염 ● | 비방염 ● | 신제품 **NEW**



Oak

CG/CF 5516 ●●



Oak

CG/CF 5517 ●●



Oak

CG/CF 5518 ●●

상기 이미지는 이해를 돕기 위한 연출 이미지로 실제 제품과 다를 수 있습니다.

※ 제품표면이 특수가공 처리된 제품으로 겹침 시공시 잘 붙지 않는 느낌이 있으나 충분히 눌러주어 압착되면 시간이 지날수록 접착면이 안정화됩니다.

**PREMIUM MATT**  
WOOD

Fire Retardant ● | Standard Range ● | NEW **NEW**



The images are for illustrative purposes and may differ from actual product.



Oak

CG/CF 5500 ●●



Oak

CG/CF 5501 ●●



Oak

CG/CF 5502 ●●

※ As being treated with a special process on the surfaces, it feels initially not sticky enough in the overlapped parts, but being fully pressed adhesive parts will be stabilized stronger over time.



**PREMIUM MATT**  
WOOD

방염 ● | 비방염 ● | 신제품 **NEW**



CG/CF 5510

상기 이미지는 이해를 돕기 위한 연출 이미지로 실제 제품과 다를 수 있습니다.



Teak

CG/CF 5512 ●●



Teak

CG/CF 5510 ●●



Teak

CG/CF 5511 ●●

※ 제품표면이 특수가공 처리된 제품으로 겹침 시공시 잘 붙지 않는 느낌이 있으나 충분히 눌러주어 압착되면 시간이 지날수록 접착면이 안정화됩니다.

**PREMIUM MATT**  
WOOD

Fire Retardant ● | Standard Range ● | NEW **NEW**



Ash

CG/CF 5513 ●●



Ash

CG/CF 5514 ●●



Ash

CG/CF 5515 ●●



CG/CF 5514

The images are for illustrative purposes and may differ from actual product.

※ As being treated with a special process on the surfaces, it feels initially not sticky enough in the overlapped parts, but being fully pressed adhesive parts will be stabilized stronger over time.



**PREMIUM MATT**  
WOOD

방염 ● | 비방염 ● | 신제품 **NEW**



Pine

CG/CF 5508 ●●



Pine

CG/CF 5509 ●●

※ 제품표면이 특수가공 처리된 제품으로 검침 시공시 잘 붙지 않는 느낌이 있으나 충분히 눌러주어 압착되면 시간이 지날수록 점착면이 안정화됩니다.



CG/CF 5508

상기 이미지는 이해를 돕기 위한 연출 이미지로 실제 제품과 다를 수 있습니다.



# PREMIUM MATT

## WOOD

방염 ● | 비방염 ● | 신제품 NEW



Standard Oak

CG/CF 5520 ●●

# PREMIUM MATT

## WOOD

Fire Retardant ● | Standard Range ● | NEW NEW



Standard Oak

CG/CF 5519 ●●



Standard Oak

CG/CF 5521 ●●



Standard Oak

CG/CF 5522 ●●

※ 제품표면이 특수가공 처리된 제품으로 겹침 시공시 잘 붙지 않는 느낌이 있으나 충분히 눌러주어 압착되면 시간이 지날수록 점착면이 안정화됩니다.

※ As being treated with a special process on the surfaces, it feels initially not sticky enough in the overlapped parts, but being fully pressed adhesive parts will be stabilized stronger over time.



# PREMIUM STONE

MATT STONE has increased surface quality with matt and special coatings felt in real stone. Enhance the dignity of your space with new sensuous products.

HG/HF 5119

The images are for illustrative purposes and may differ from actual product.

## PREMIUM MATT STONE

방염 ● | 비방염 ● | 신제품 NEW

손끝으로  
만져보세요!



Brush Cement

NEW HG/HF 5117 ●●



Brush Cement

NEW HG/HF 5118 ●●



Brush Cement

NEW HG/HF 5119 ●●

※ 제품표면이 특수가공 처리된 제품으로 겹침 시공시 잘 붙지 않는 느낌이 있으나 충분히 눌러주어 압착되면 시간이 지날수록 점착면이 안정화됩니다.

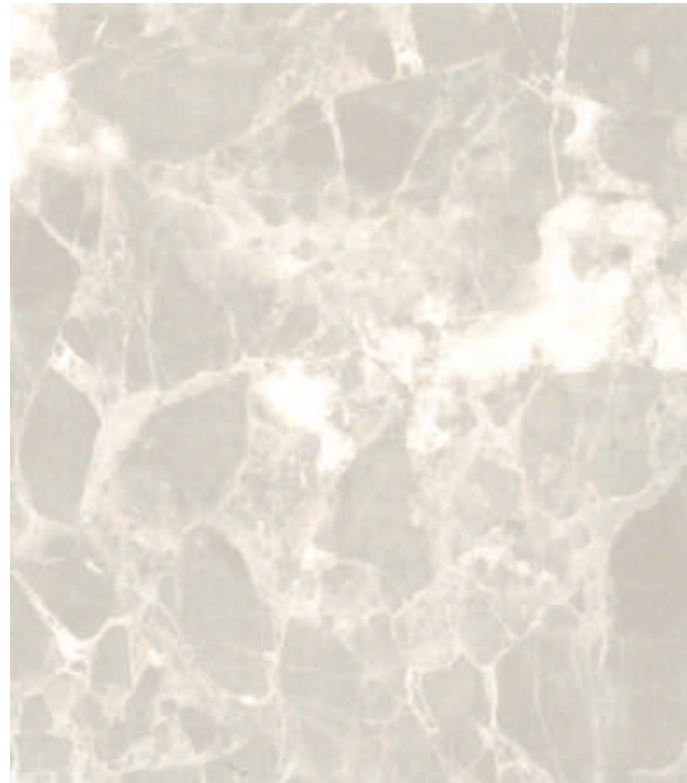


**PREMIUM MATT**  
STONE

방염 ● | 비방염 ● | 신제품 **NEW**

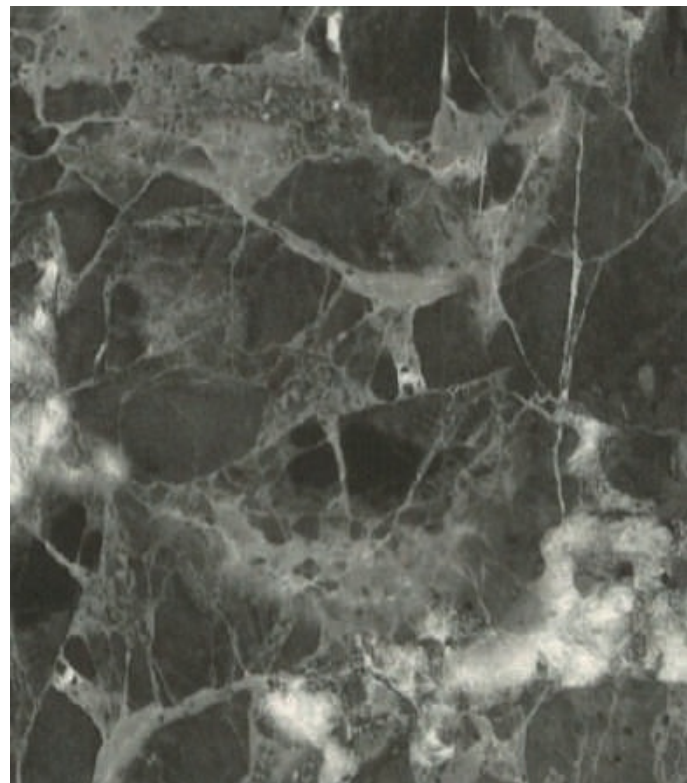


HG/HF 5120



Matt Marble

**NEW** HG/HF 5120 ●●



Matt Marble

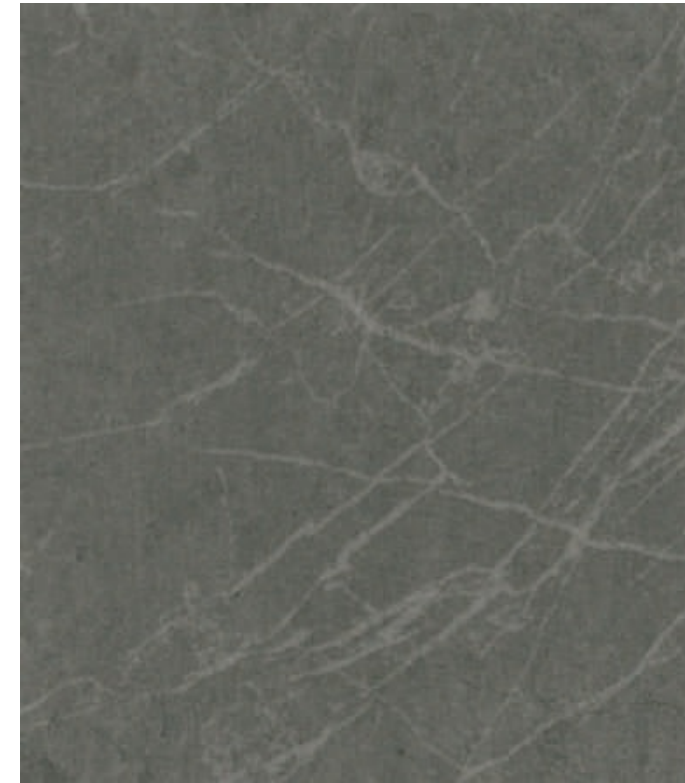
**NEW** HG/HF 5121 ●●

상기 이미지는 이해를 돕기 위한 연출 이미지로 실제 제품과 다를 수 있습니다.

※ 제품표면이 특수가공 처리된 제품으로 겹침 시공시 잘 붙지 않는 느낌이 있으나 충분히 눌러주어 압착되면 시간이 지날수록 접착면이 안정화됩니다.

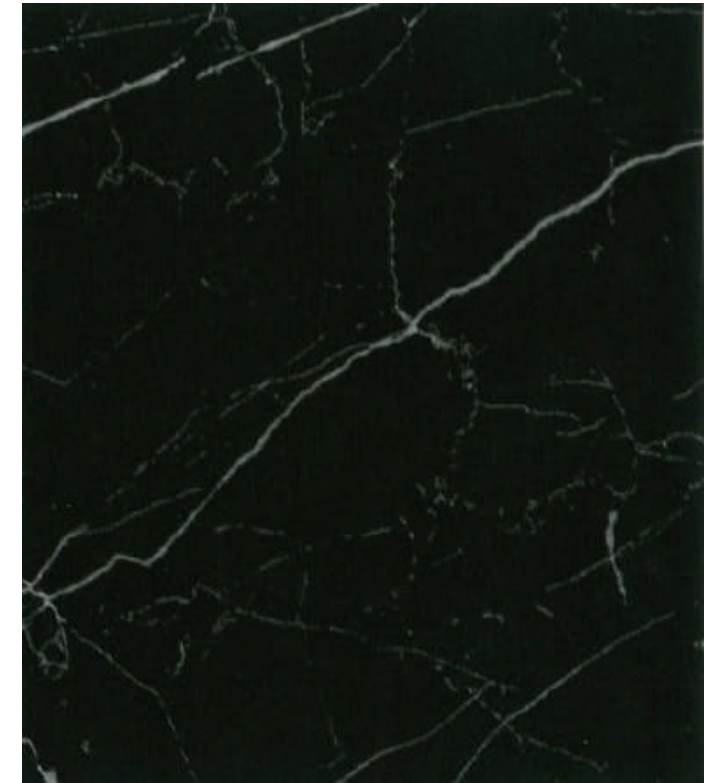
**PREMIUM MATT**  
STONE

Fire Retardant ● | Standard Range ● | **NEW** **NEW**



Matt Marquina

**NEW** HG/HF 5122 ●●



Matt Marquina

**NEW** HG/HF 5123 ●●



HG/HF 5122

The images are for illustrative purposes and may differ from actual product.

※ As being treated with a special process on the surfaces, it feels initially not sticky enough in the overlapped parts, but being fully pressed adhesive parts will be stabilized stronger over time.



**PREMIUM MATT**  
STONE

방염 ● | 비방염 ● | 신제품 NEW



Urban Stone

NEW HG/HF 5115 ●●



Urban Stone

NEW HG/HF 5116 ●●

※ 제품표면이 특수가공 처리된 제품으로 겹침 시공시 잘 붙지 않는 느낌이 있으나 충분히 눌러주어 압착되면 시간이 지날수록 접착면이 안정화됩니다.

**PREMIUM MATT**  
STONE

Fire Retardant ● | Standard Range ● | NEW NEW



Travertine

CG/CF 5529 ●●



Travertine

CG/CF 5530 ●●



Travertine

CG/CF 5531 ●●

※ As being treated with a special process on the surfaces, it feels initially not sticky enough in the overlapped parts, but being fully pressed adhesive parts will be stabilized stronger over time.



# PREMIUM FABRIC

MATT FABRIC is a premium product that provides warmth, softness of a fabric which is on a different level from existing fabrics and a soft texture when touched.



CG/CF 5528

The images are for illustrative purposes and may differ from actual product.

## PREMIUM MATT FABRIC

방염 ● | 비방염 ● | 신제품 NEW

손끝으로  
만져보세요!



Real Fabric

CG/CF 5528 ●●



Real Fabric

CG/CF 5526 ●●



Real Fabric

CG/CF 5527 ●●

※ 제품표면이 특수가공 처리된 제품으로 겹침 시공시 잘 붙지 않는 느낌이 있으나 충분히 눌러주어 압착되면 시간이 지날수록 점착면이 안정화됩니다.



**PREMIUM MATT**  
FABRIC

방염 ● | 비방염 ● | 신제품 NEW



Warm Linen

CG/CF 5523 ●●



Warm Linen

CG/CF 5524 ●●



Warm Linen

CG/CF 5525 ●●

※ 제품표면이 특수가공 처리된 제품으로 겹침 시공시 잘 붙지 않는 느낌이 있으나 충분히 눌러주어 압착되면 시간이 지날수록 접착면이 안정화됩니다.



CG/CF 5525

상기 이미지는 이해를 돕기 위한 연출 이미지로 실제 제품과 다를 수 있습니다.



# PREMIUM METAL

MATT METAL is a range of products that express the feel of a simple, luxurious metal. Decorate your space with confidence with MATT METAL, which matches your metallic modern lifestyle.

JG/JF 9000

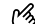
The images are for illustrative purposes and may differ from actual product.

## PREMIUM MATT METAL

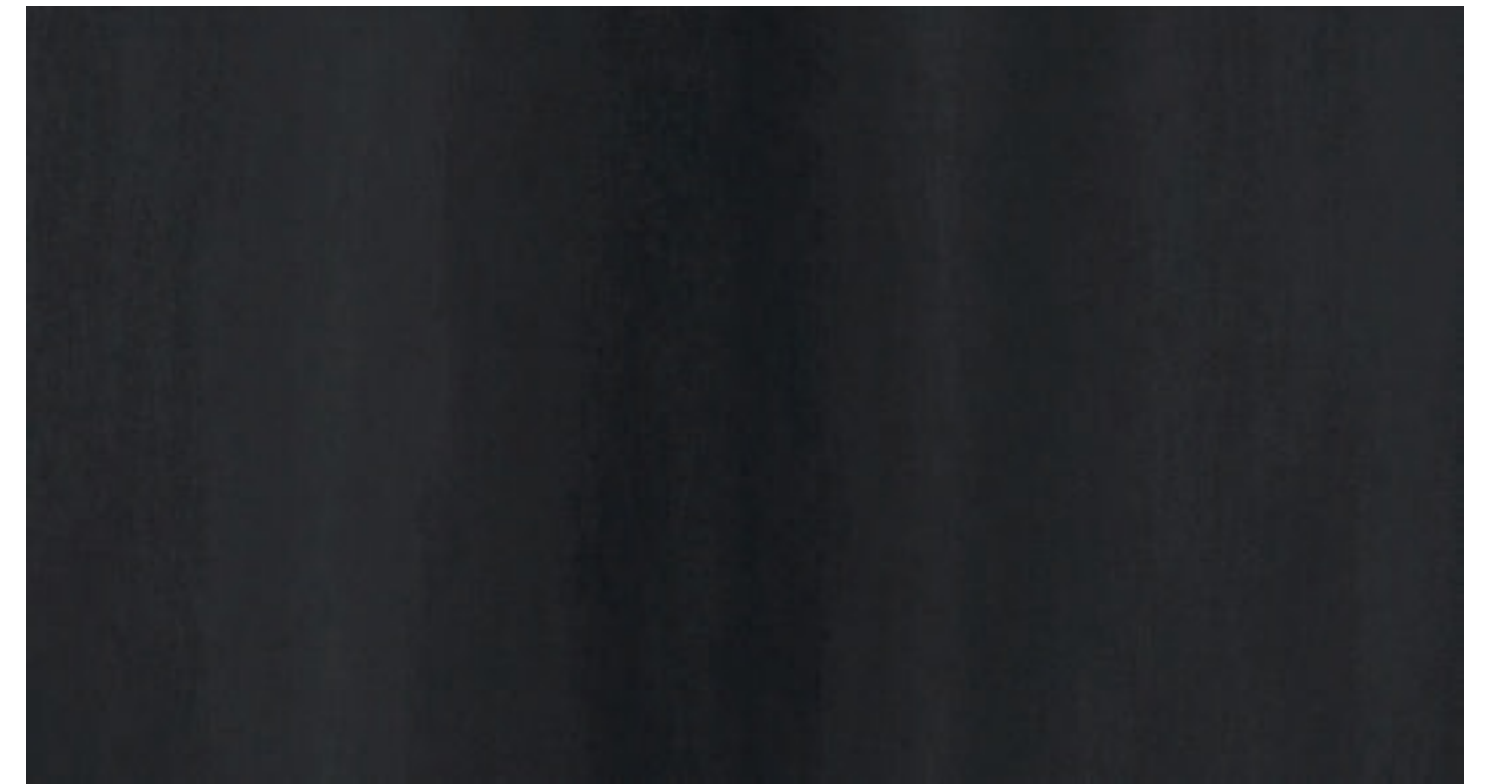
방염 ● | 비방염 ● | 신제품 NEW

손끝으로  
만져보세요!



Blackened Steel (Blue) 

NEW JG/JF 9000 ●●



Blackened Steel (Bronze) 

NEW JG/JF 9001 ●●

※ 제품표면이 특수가공 처리된 제품으로 겹침 시공시 잘 붙지 않는 느낌이 있으나 충분히 눌러주어 압착되면 시간이 지날수록 점착면이 안정화됩니다.



**PREMIUM MATT**  
METAL

방염 ● | 비방염 ● | 신제품 **NEW**



XG/XF 7014

상기 이미지는 이해를 돕기 위한 연출 이미지로 실제 제품과 다를 수 있습니다.



Cloud Metal

XG/XF 7015 ●●



Metal Slate

XG/XF 7014 ●●

※ 제품표면이 특수가공 처리된 제품으로 겹침 시공시 잘 붙지 않는 느낌이 있으나 충분히 눌러주어 압착되면 시간이 지날수록 점착면이 안정화됩니다.

**PREMIUM MATT**  
METAL

Fire Retardant ● | Standard Range ● | NEW **NEW**



Minimal Cloud

XG/XF 7012 ●●



Matt Solid

XG/XF 7013 ●●



Minimal Cloud

XG/XF 7011 ●●



XG/XF 7013

The images are for illustrative purposes and may differ from actual product.

※ As being treated with a special process on the surfaces, it feels initially not sticky enough in the overlapped parts, but being fully pressed adhesive parts will be stabilized stronger over time.



# METAL

Monochromatic and metallic, these two materials have recently become the most used materials in various spaces, from furniture to art walls and home appliances. Enjoy modern changes that suit your style in a variety of spaces.

HG/HF 5104

XG/XF 7019

The images are for illustrative purposes and may differ from actual product.

## METAL PEARLESCENT METAL

방염 ● | 비방염 ● | 신제품 **NEW**



Rose Gold

**NEW** HG/HF 5104 ●●



Bronze Metal

**NEW** XG/XF 7019 ●●



# METAL

## PEARLESCENT METAL

방염 ● | 비방염 ● | 신제품 NEW



White Gold NEW HG/HF 5100 ●●



Peach Gold NEW HG/HF 5101 ●●



Metal Gold NEW HG/HF 5102 ●●



Champagne Gold NEW HG/HF 5103 ●●



Bronze Gold NEW HG/HF 5105 ●●

# METAL

## HAIRLINE BRONZE METAL

Fire Retardant ● | Standard Range ● | NEW NEW



Yellow Bronze NEW XG/XF 7016 ●●



Red Bronze NEW XG/XF 7017 ●●



Dark Bronze NEW XG/XF 7018 ●●



# METAL

방염 ● | 비방염 ● | 신제품 NEW



Metal **MG 124** ●



Metal **MG 499** ●



Metal **MG/MF 125** ●●



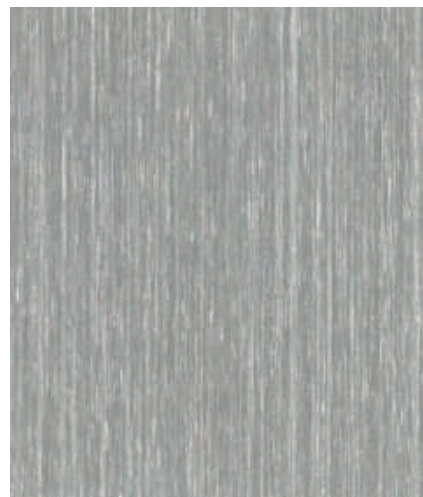
Metal **MG/MF 123** ●●



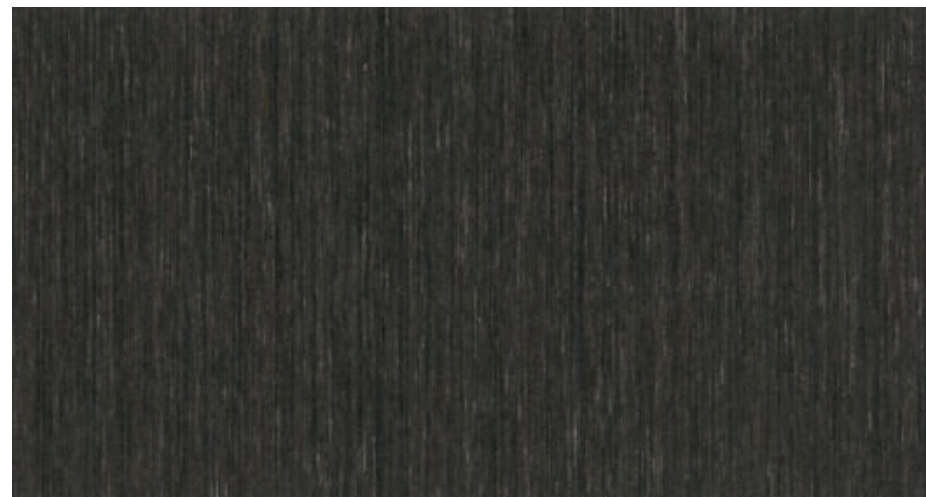
Metal **MG 498** ●



Metal **MG 3021** ●



Metal **MG 3022** ●



Metal **MG/MF 448** ●●

# METAL

Fire Retardant ● | Standard Range ● | NEW NEW



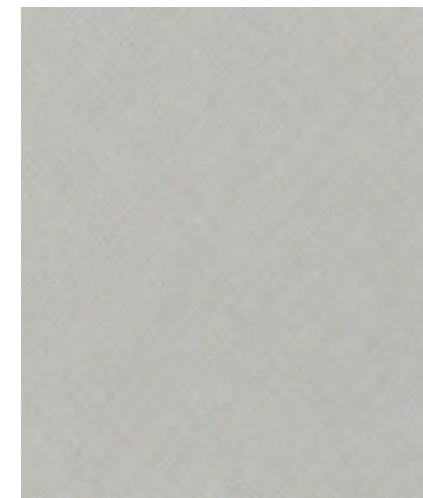
Saffiano **DG 3500** ●



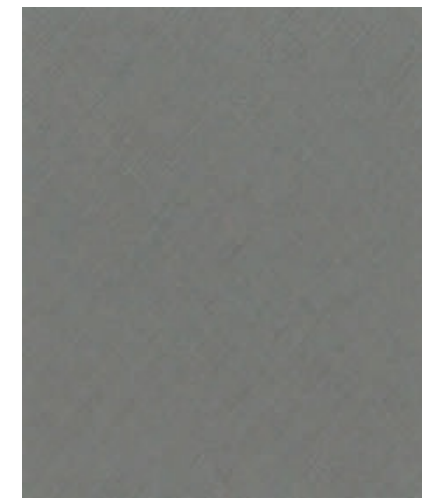
Saffiano **DG 3501** ●



Saffiano **DG 3504** ●



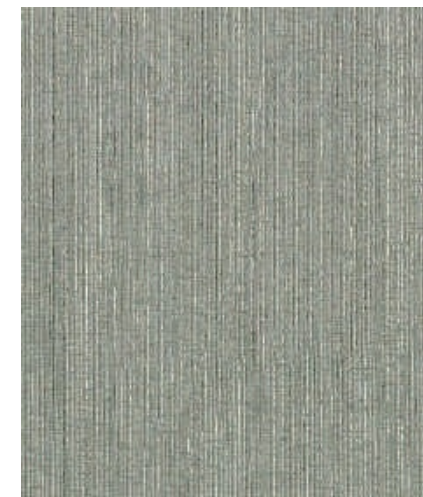
Saffiano **DG 3502** ●



Saffiano **DG 3503** ●



Cement Metal **TG 4006** ●



Luxury Metal **JG 698** ●



Luxury Metal **TG/TF 465** ●●



Metal Leaf **TG 4004** ●



# STONE & MARBLE

Apply a natural (floating) sensibility and original design to your space with colours such as concrete, stone and marble, and three-dimensional embossing. With its unchanging beauty, the stone material blends harmoniously with a variety of textured materials, including metal, matt and light, to add value to the space. Create a more luxurious atmosphere.

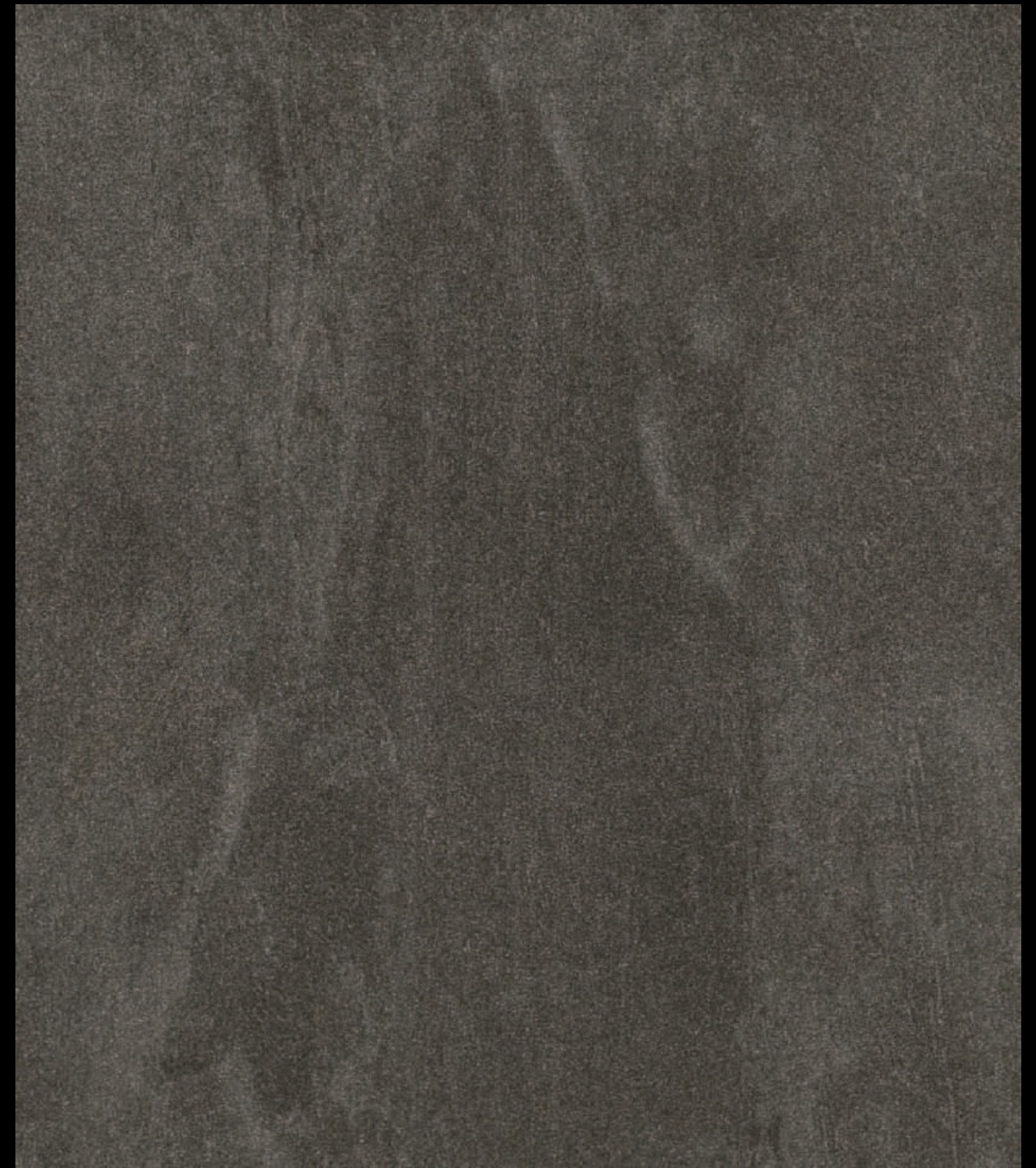
YG/YF 4503

MG/MF 984

The images are for illustrative purposes and may differ from actual product.

## STONE & MARBLE

방염 ● | 비방염 ● | 신제품 NEW



Aspetto

YG/YF 4503 ●●



# STONE & MARBLE

## STONE

방염 ● | 비방염 ● | 신제품 NEW



Aspetto

YG/YF 4501 ●●



Aspetto

YG/YF 4502 ●●



Aspetto

YG 4500 ●

# STONE & MARBLE

## STONE

Fire Retardant ● | Standard Range ● | NEW NEW



Modern Stone

MG/MF 3080 ●●



Modern Stone

MG/MF 3081 ●●



Modern Stone

MG/MF 3082 ●●



Modern Stone

MG 3083 ●



Modern Concrete

MG/MF 3085 ●●



Concrete

TG 4010 ●



# STONE & MARBLE

## STONE

방염 ● | 비방염 ● | 신제품 **NEW**



상기 이미지는 이해를 돕기 위한 연출 이미지로 실제 제품과 다를 수 있습니다.



Matt Marble **MG 3058** ●



Peacock Natural **MG/MF 3001** ●●



Concrete **MG 451** ●



Rustic Stone **MG 462** ●



Peacock Natural **MG 3003** ●

# STONE & MARBLE

## STONE

Fire Retardant ● | Standard Range ● | NEW **NEW**



Concrete **MG/MF 984** ●●



Concrete **MG 985** ●



Concrete **MG/MF 986** ●●



Natural Stone **PG 6010** ●



Urban Stone **MG/MF 485** ●●



Bricks **NG 968** ●



Real Stone **TG 4014** ●



Sugar Stone **SG 855** ●



# STONE & MARBLE

## MARBLE

방염 ● | 비방염 ● | 신제품 NEW



MG/MF 3054



Carrara

MG/MF 3054 ●●



Marble

TG 425 ●

상기 이미지는 이해를 돕기 위한 연출 이미지로 실제 제품과 다를 수 있습니다.

# STONE & MARBLE

## MARBLE

Fire Retardant ● | Standard Range ● | NEW NEW



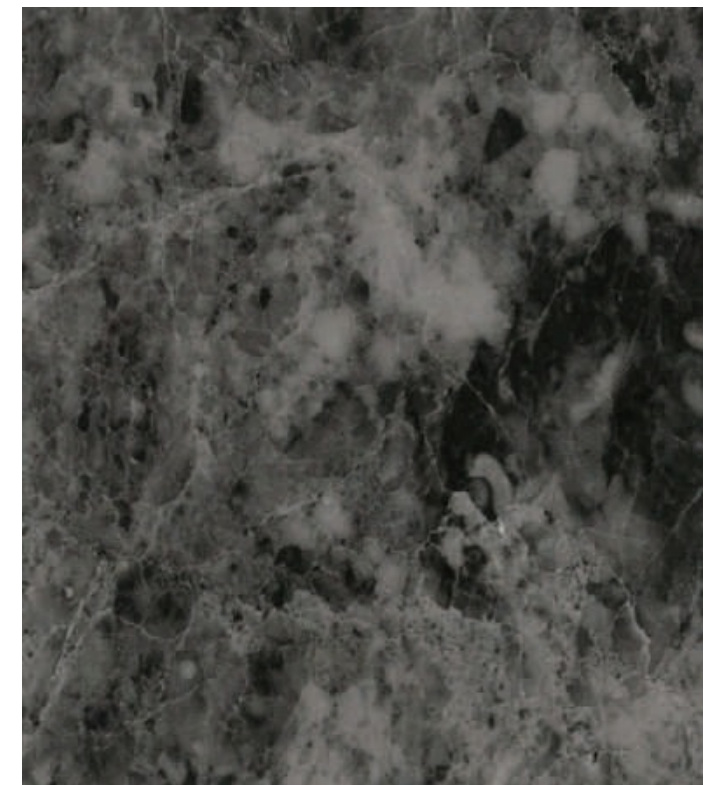
MG 446

The images are for illustrative purposes and may differ from actual product.



Marble

MG 445 ●



Marble

MG 446 ●



# FABRIC & LEATHER

Add warmth to your space with our range of rich leather materials.  
Blend with wood & rattan furniture to create a truly luxurious look and feeling.

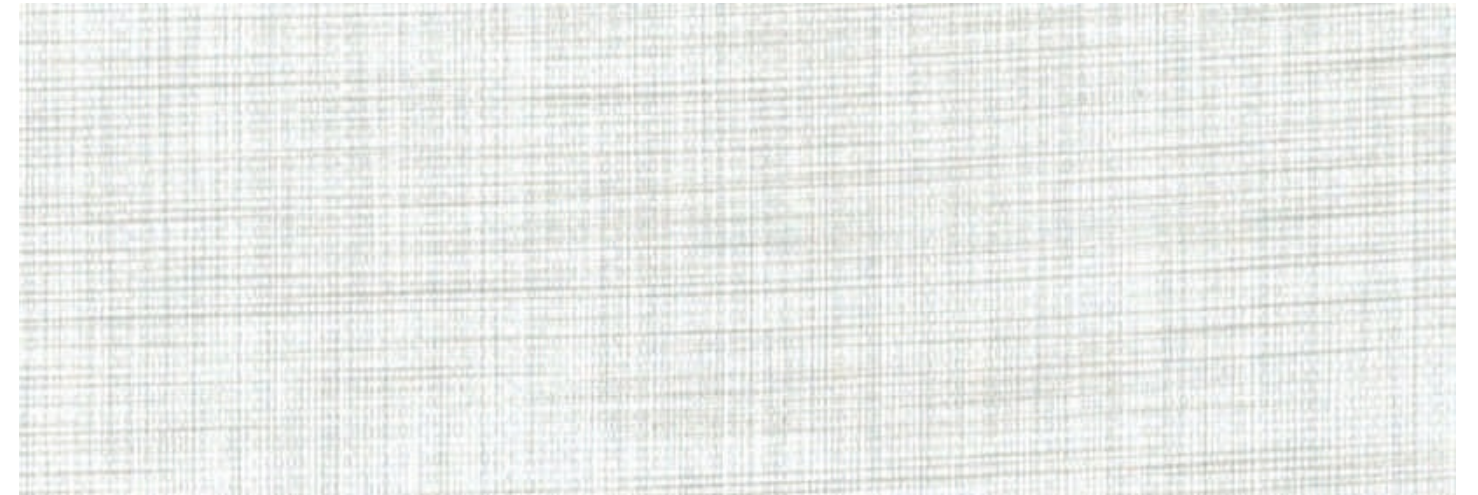
DG/DF 3505

The images are for illustrative purposes and may differ from actual product.

## FABRIC & LEATHER

방염 ● | 비방염 ● | 신제품 NEW

### FABRIC



Plain Linen

DG/DF 3505 ●●



Plain Linen

DG/DF 3506 ●●



Plain Linen

DG/DF 3507 ●●



# FABRIC & LEATHER

## FABRIC

방염 ● | 비방염 ● | 신제품 NEW



Linen MG/MF 3060 ●●



Linen MG/MF 3061 ●●



Linen MG/MF 3062 ●●



Fabric MG/MF 452 ●●



Fabric MG/MF 453 ●●



Fabric MG/MF 454 ●●



Tweed TG 4000 ●

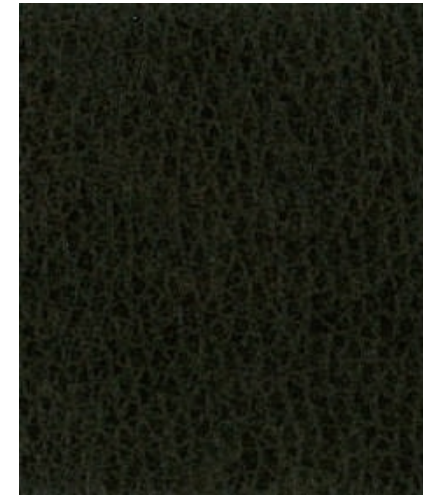


Natural Fabric MG/MF 455 ●●

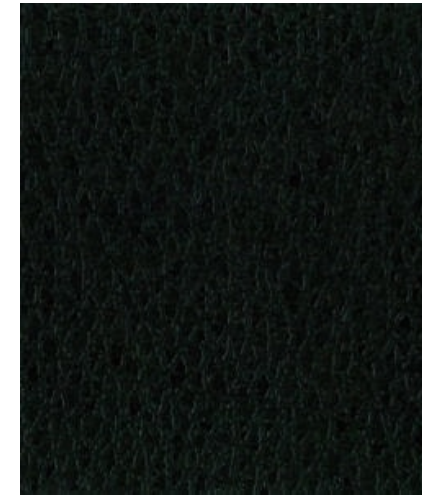
# FABRIC & LEATHER

## LEATHER

Fire Retardant ● | Standard Range ● | NEW NEW



Leather MG 460 ●



Leather TG 410 ●



Square SE 806 ●



Leather TG 4015 ●



Cross Stripe SC 725 ●



Engraving SC 774 ●



Anaconda SP 840 ●



# WOOD

From Standard OAK to TEAK and ELM, the various woodgrain designs are the best material to add warmth to the space. Special product such as 'MULTI PRINTING' products express the texture of wood more prominently, and a variety of patterns and colors. S, M, and N series are showing a rich & trendy woodgrain. Choose a product that fits your space.

ZG/ZF 5029

The images are for illustrative purposes and may differ from actual product.

## WOOD

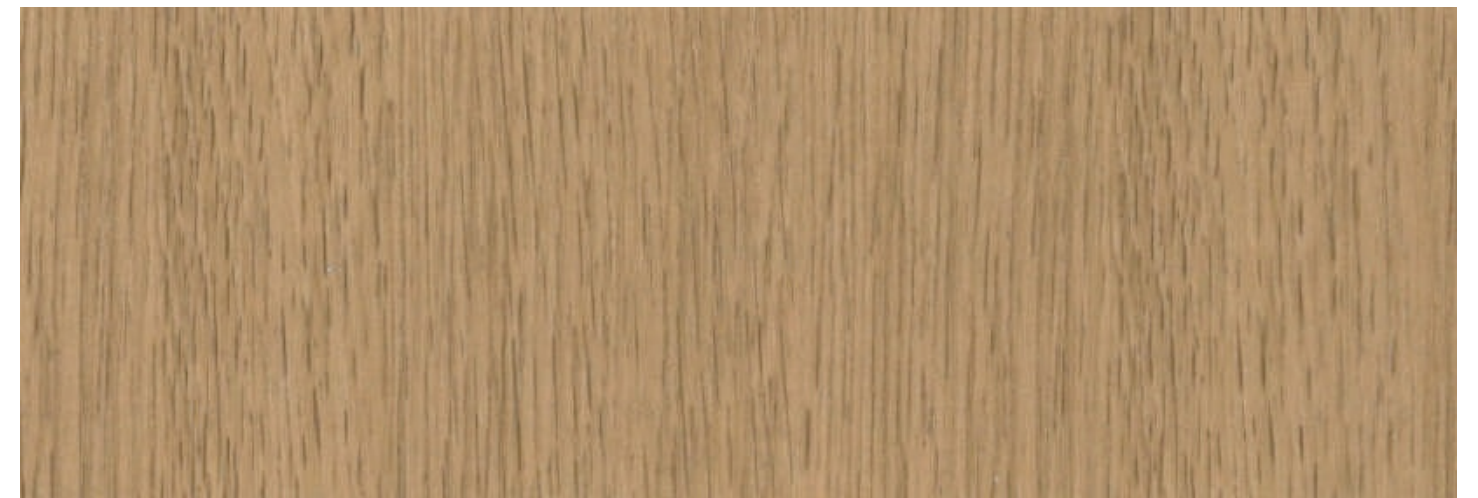
### MULTI PRINTING WOOD

방염 ● | 비방염 ● | 신제품 NEW



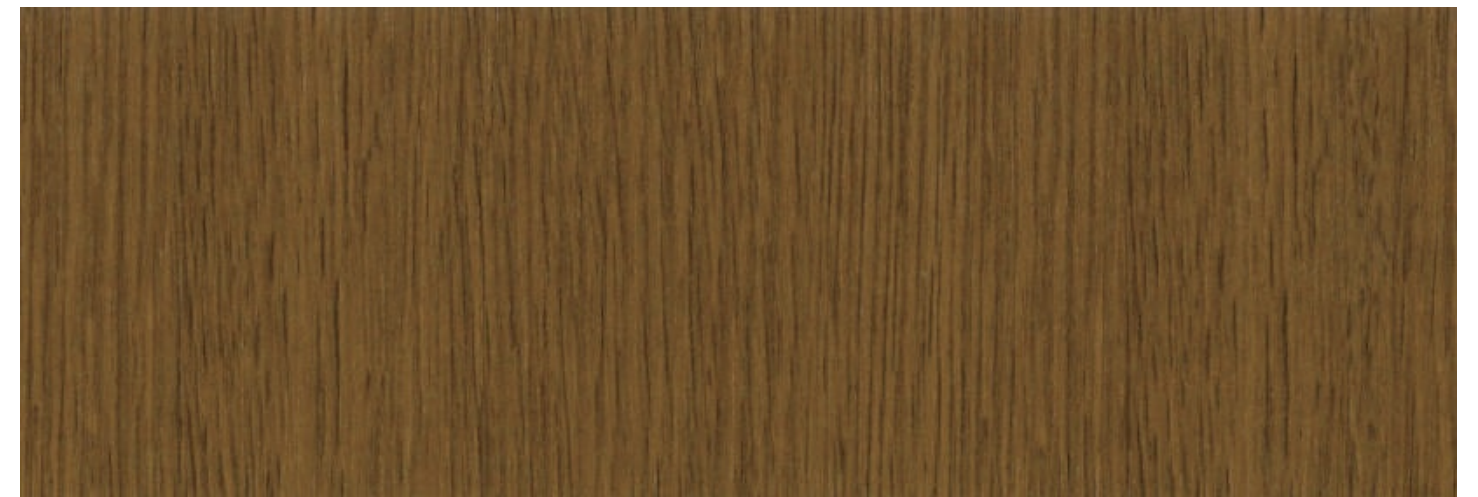
Oak

NEW ZG/ZF 5028 ●●



Oak

NEW ZG/ZF 5029 ●●



Oak

NEW ZG/ZF 5030 ●●



# WOOD

MULTI PRINTING WOOD

방염 ● | 비방염 ● | 신제품 NEW



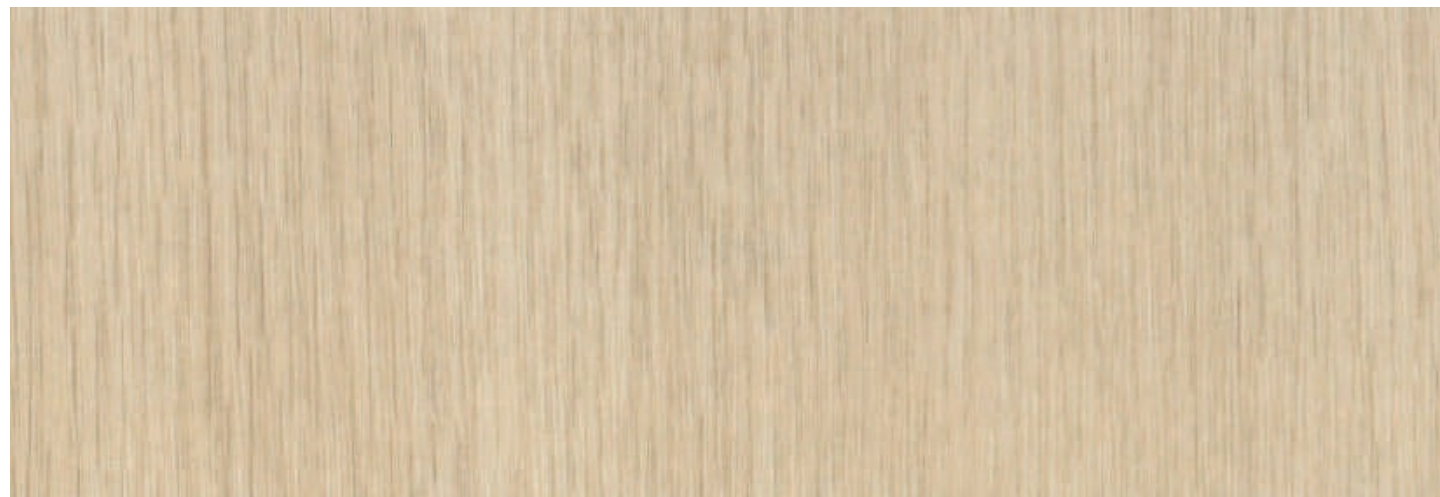
Light Oak

NEW ZG/ZF 5038 ●●



Light Oak

NEW ZG/ZF 5039 ●●



Light Oak

NEW ZG/ZF 5040 ●●



ZG/ZF 5040

상기 이미지는 이해를 돕기 위한 연출 이미지로 실제 제품과 다를 수 있습니다.



# WOOD

## MULTI PRINTING WOOD

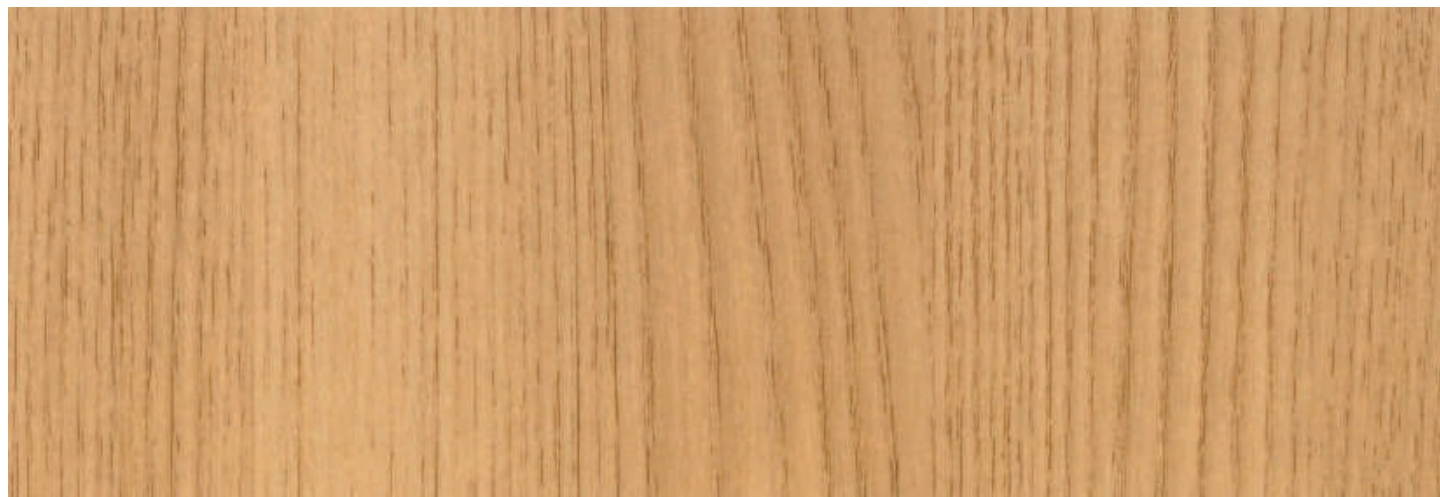
방염 ● | 비방염 ● | 신제품 NEW



Oak NEW ZG/ZF 5033 ●●



Oak NEW ZG/ZF 5034 ●●



Oak NEW ZG/ZF 5035 ●●



ZG/ZF 5035

상기 이미지는 이해를 돕기 위한 연출 이미지로 실제 제품과 다를 수 있습니다.



# WOOD

MULTI PRINTING WOOD

방염 ● | 비방염 ● | 신제품 NEW



상기 이미지는 이해를 돕기 위한 연출 이미지로 실제 제품과 다를 수 있습니다.



Washed Ash

NEW ZG/ZF 5045 ●●

# WOOD

MULTI PRINTING WOOD

Fire Retardant ● | Standard Range ● | NEW NEW



Washed Ash

NEW ZG/ZF 5041 ●●



Washed Ash

NEW ZG/ZF 5044 ●●



Washed Ash

NEW ZG/ZF 5042 ●●



Washed Ash

NEW ZG/ZF 5043 ●●



# WOOD

MULTI PRINTING WOOD

방염 ● | 비방염 ● | 신제품 NEW



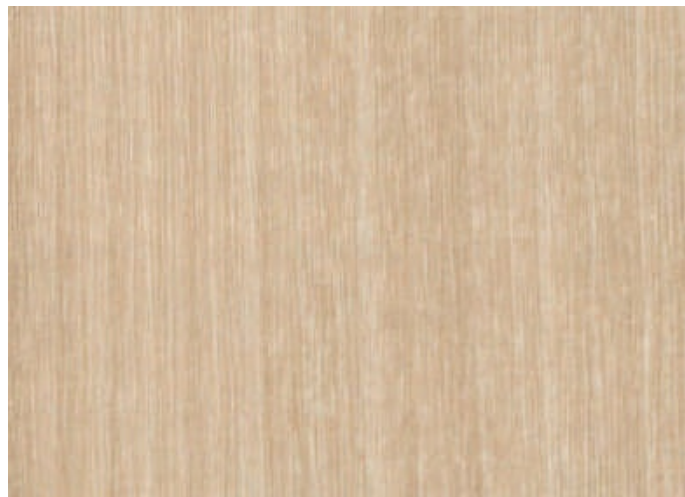
Elm

NEW ZG/ZF 5036 ●●



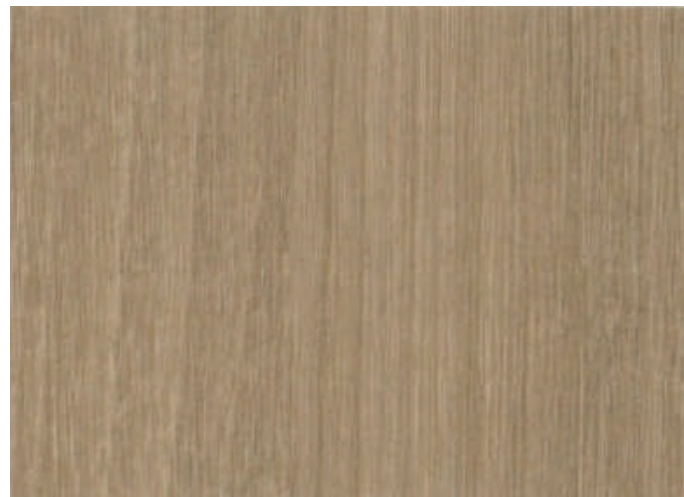
Elm

NEW ZG/ZF 5037 ●●



Maple

NEW ZG/ZF 5031 ●●



Maple

NEW ZG/ZF 5032 ●●



Amazahoue

NEW EG/EF 6100 ●●



Amazahoue

NEW EG/EF 6101 ●●

# WOOD

MULTI PRINTING WOOD

Fire Retardant ● | Standard Range ● | NEW NEW



Oak

ZG/ZF 5019 ●●



Oak

ZG/ZF 5018 ●●



Oak

ZG/ZF 5020 ●●



Oak

ZG/ZF 5021 ●●



Oak

ZG/ZF 5022 ●●



Oak

ZG 5027 ●



# WOOD

## MULTI PRINTING WOOD

방염 ● | 비방염 ● | 신제품 NEW



Multi Print Wood ZG/ZF 5000 ●●



Vintage Oak ZG/ZF 5009 ●●



Multi Print Wood ZG 5003 ●



Vintage Oak ZG/ZF 5010 ●●



Vintage Oak ZG 5011 ●



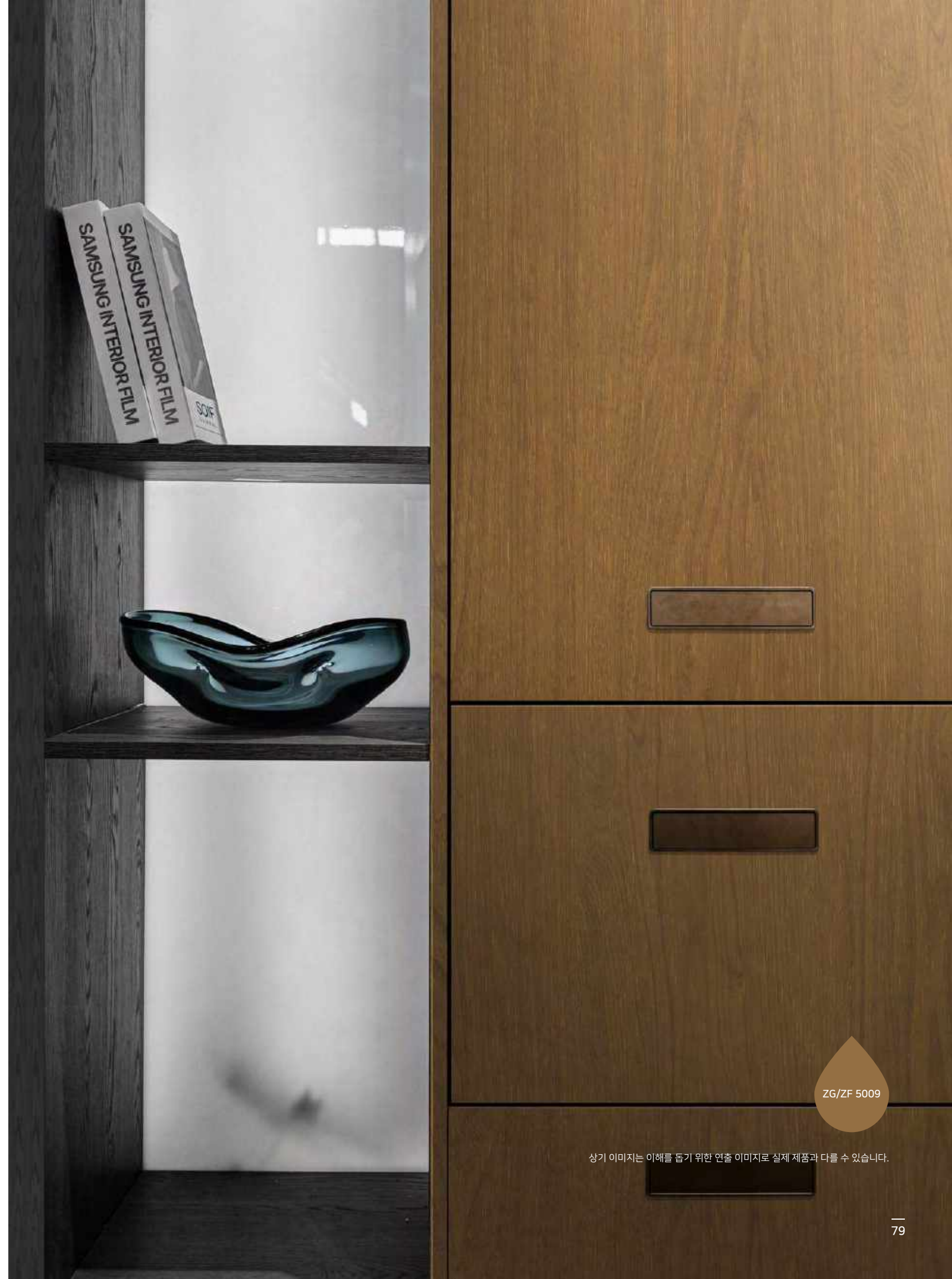
Vintage Oak ZG/ZF 5012 ●●



Teak ZG/ZF 5015 ●●



Teak ZG/ZF 5016 ●●



ZG/ZF 5009

상기 이미지는 이해를 돕기 위한 연출 이미지로 실제 제품과 다를 수 있습니다.



**WOOD**  
M series

방염 ● | 비방염 ● | 신제품 NEW



Ash

MG/MF 3084 ●●



Pine

MG/MF 3069 ●●



Wizard Grain

MG/MF 3064 ●●



Wizard Grain

MG/MF 3065 ●●



Wizard Grain

MG/MF 3066 ●●



Ash

MG 3005 ●



Teak

MG 3006 ●



Primary Oak

MG/MF 3007 ●●



MG/MF 3084

상기 이미지는 이해를 돕기 위한 연출 이미지로 실제 제품과 다를 수 있습니다.



**WOOD**  
N series

방염 ● | 비방염 ● | 신제품 **NEW**



String Wood **NG 402** ●



Sycamore **NG 158** ●



Stripe Wood **NG/NF 326** ●●



Pearl Ash **NG 2010** ●



Oak **NG 2006** ●



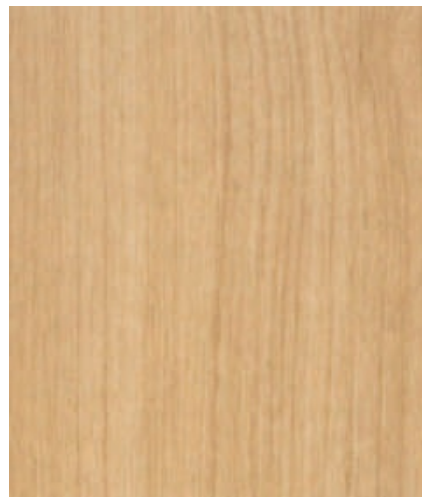
White Ash **NG/NF 2001** ●●



Elm **NG 217** ●



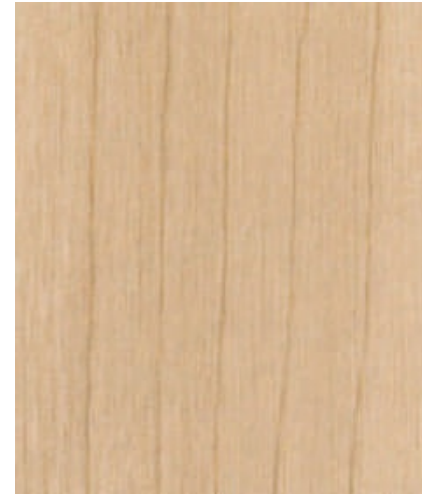
Elm **NG 218** ●



Pear **NG/NF 250** ●●

**WOOD**  
N series

Fire Retardant ● | Standard Range ● | NEW **NEW**



Birch **NG/NF 225** ●●



Oak **NG/NF 207** ●●



Vilora **NG/NF 284** ●●



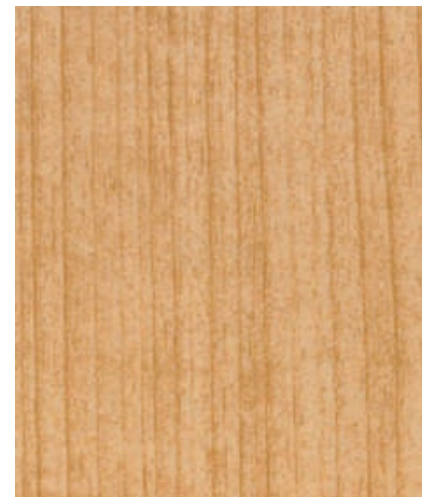
Maple **NG/NF 388** ●●



Oak **NG/NF 2020** ●●



Elm **NG/NF 336** ●●



Maple **NG/NF 349** ●●



Walnut **NG/NF 227** ●●



Oak **NG 971** ●



# WOOD

N series

방염 ● | 비방염 ● | 신제품 NEW



Oak PG 904 ●



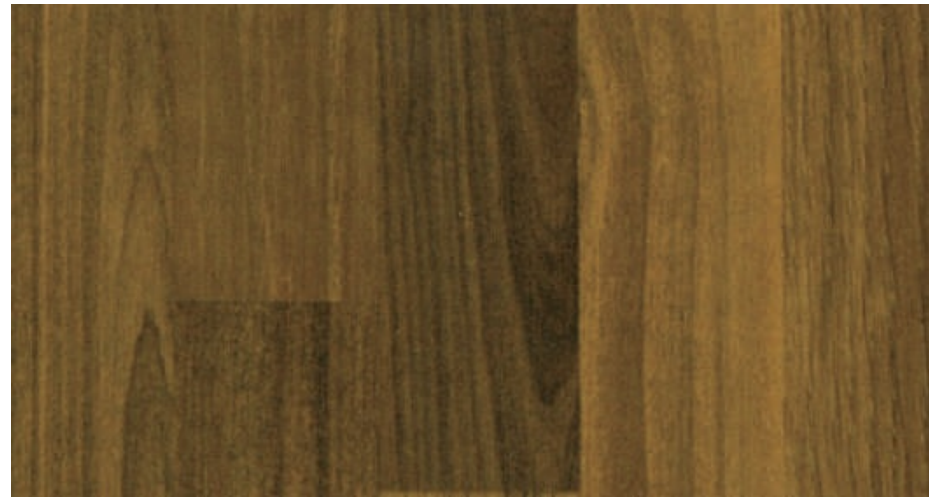
Oak NG/NF 2021 ●●



Oak NG/NF 2022 ●●



Style Bamboo NG 2024 ●



Multi Wood NG 253 ●



Noce NG/NF 03 ●●



Multi Wood NG 256 ●

# WOOD

N series

Fire Retardant ● | Standard Range ● | NEW NEW



Oak NG 960 ●



Walnut NG 267 ●



Oak NG 962 ●



Antique Teak NG 493 ●



Antique Pine NG/NF 400 ●●



Golden Teak PG 940 ●



# WOOD

S series

방염 ● | 비방염 ● | 신제품 NEW



Antique Wood SG/SF 1107 ●●



Ash SG/SF 179 ●●



Elm SG/SF 81 ●●



Ash SG/SF 1110 ●●



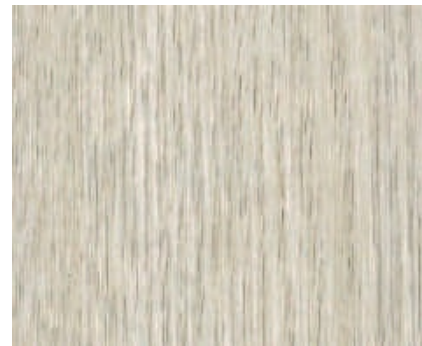
Acacia SG 12 ●



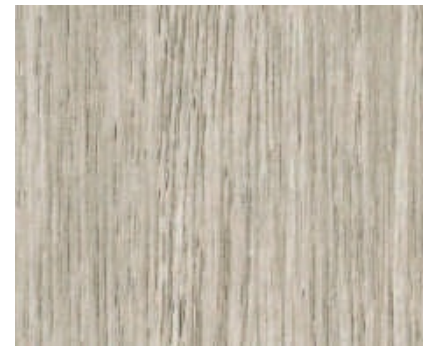
Pine SG/SF 142 ●●



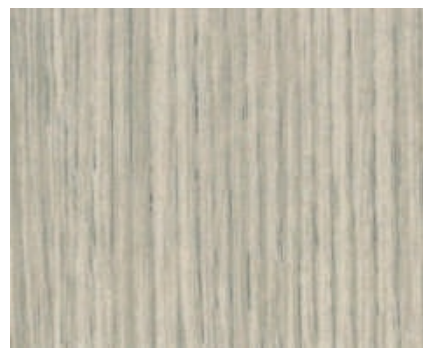
Washed Oak SG/SF 1113 ●●



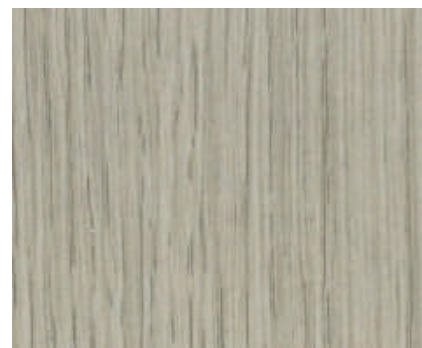
Ash SG/SF 1100 ●●



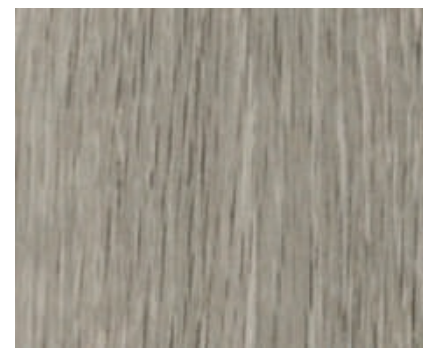
Ash SG/SF 178 ●●



Ivy SG 209 ●



Ivy SG 211 ●



Oak SG/SF 361 ●●

# WOOD

S series

Fire Retardant ● | Standard Range ● | NEW NEW



Ash SG 140 ●



Pine SG 143 ●



Ash SG/SF 37 ●●



Ash SG/SF 1111 ●●



Ash SG/SF 1112 ●●



Oak SG 171 ●



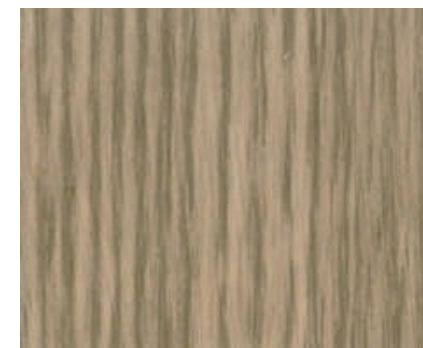
French Oak SG/SF 30 ●●



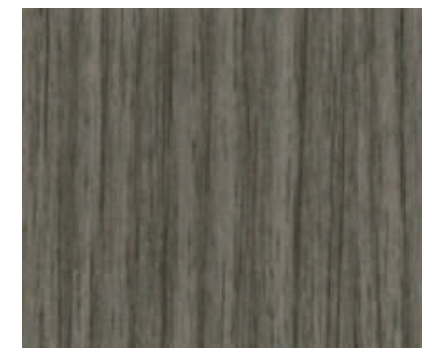
Oak SG/SF 82 ●●



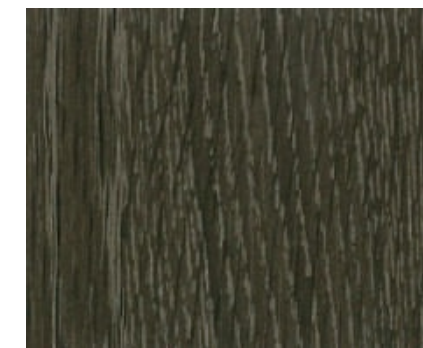
Washed Oak SG 1115 ●



Oak SG/SF 40 ●●



Montaigne Walnut SG 385 ●



Ash SG 1116 ●

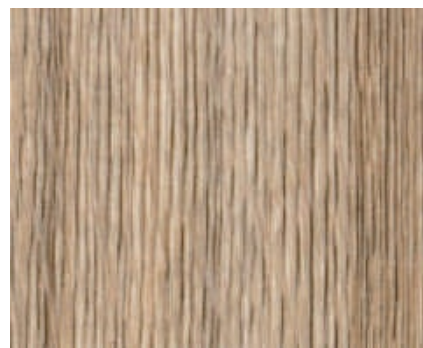


**WOOD**  
S series

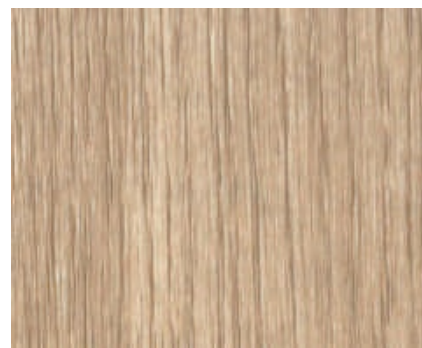
방염 ● | 비방염 ● | 신제품 NEW



상기 이미지는 이해를 돕기 위한 연출 이미지로 실제 제품과 다를 수 있습니다.



French Oak SG/SF 29 ●●



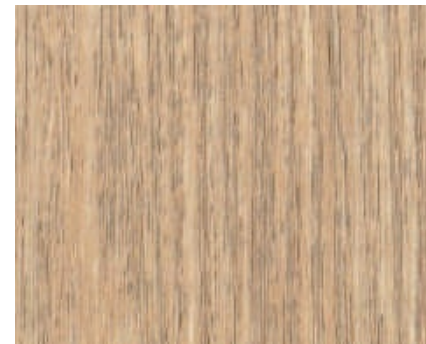
Oak SG/SF 55 ●●



Oak SG/SF 54 ●●



Teak SG/SF 249 ●●



Ash SG/SF 1102 ●●



Compile Wood SG/SF 282 ●●

**WOOD**  
S series

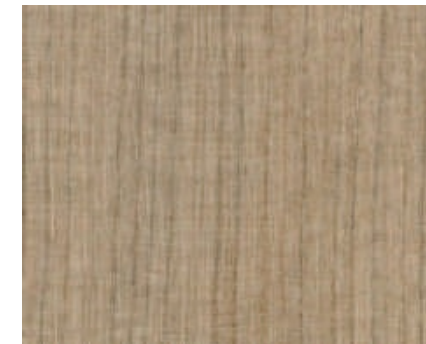
Fire Retardant ● | Standard Range ● | NEW NEW



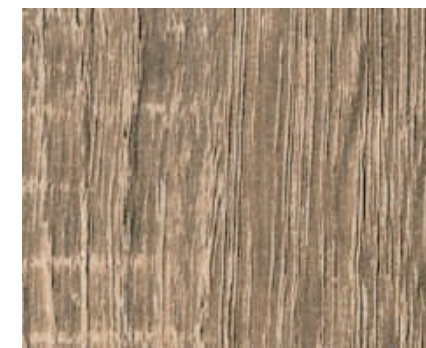
Maple SG/SF 20 ●●



Ash SG/SF 1101 ●●



Cherry SG 1118 ●



Sonoma Oak SG/SF 167 ●●



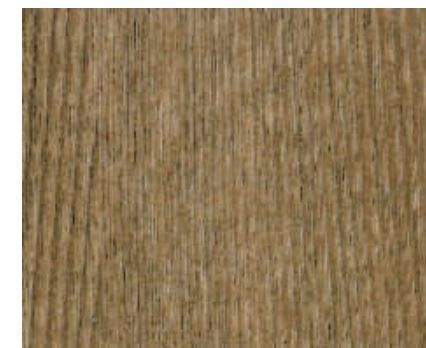
Maple SG/SF 43 ●●



Washed Oak SG/SF 1114 ●●



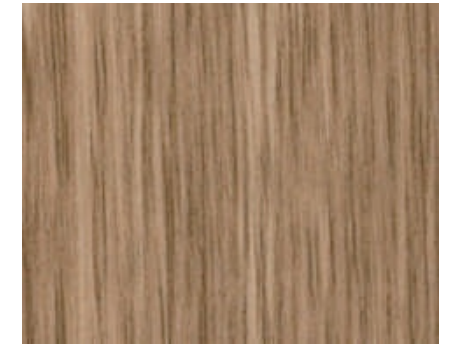
Teak SG/SF 09 ●●



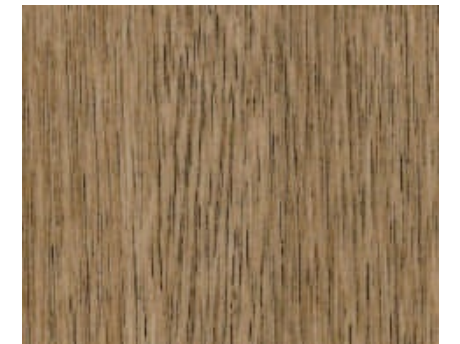
Ash SG 141 ●



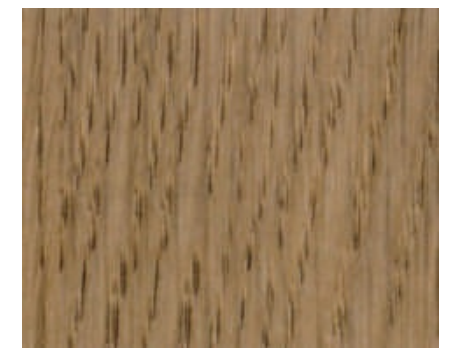
Ash SG/SF 181 ●●



Oak SG 98 ●



Ash SG/SF 177 ●●



Oak SG/SF 189 ●●



**WOOD**  
S series

방염 ● | 비방염 ● | 신제품 **NEW**



Ash **SG/SF 58** ●●



Maple **SG/SF 363** ●●



Castagno Oak **SG/SF 381** ●●



Maple **SG/SF 251** ●●



Oak **SG/SF 190** ●●



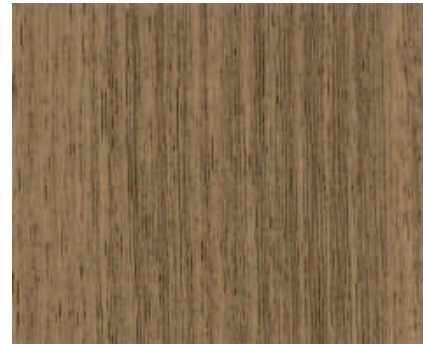
Akagashi **SG/SF 237** ●●



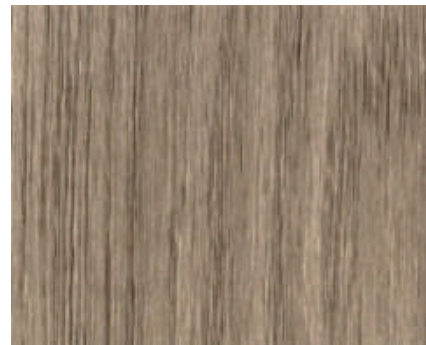
Oak **SG/SF 169** ●●



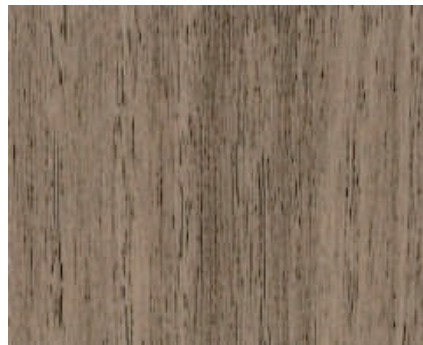
Oak **SG/SF 170** ●●



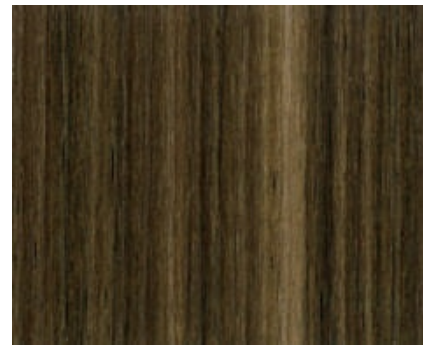
Acacia **SG/SF 10** ●●



Oak **SG 56** ●



Acacia **SG/SF 186** ●●



Compile Wood **SG/SF 148** ●●

**WOOD**  
S series

Fire Retardant ● | Standard Range ● | NEW **NEW**



Cherry **SG/SF B1** ●●



Pine **SG/SF 44** ●●



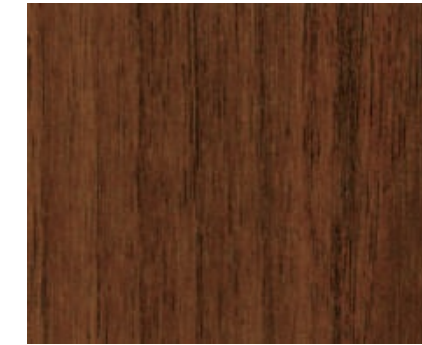
Cherry **SG/SF 101** ●●



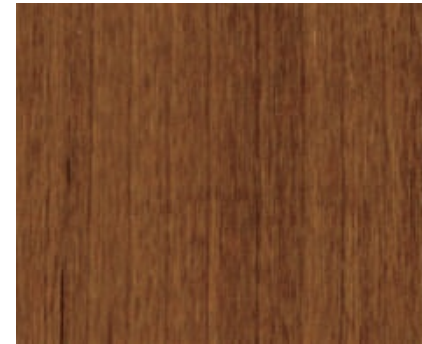
Castagno Oak **SG/SF 383** ●●



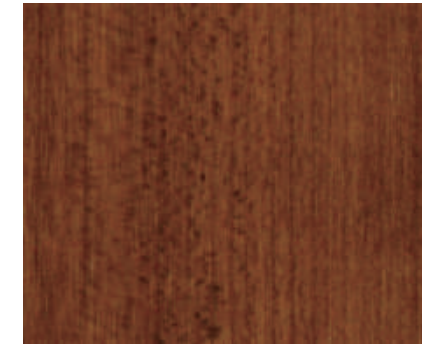
Cherry **SG 26** ●



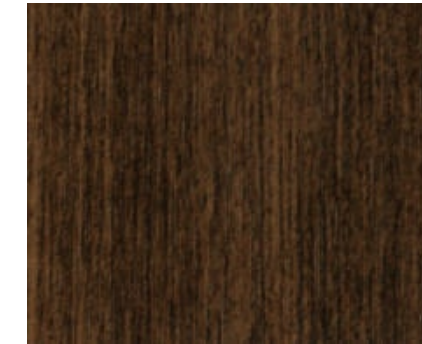
Cherry **SG 23** ●



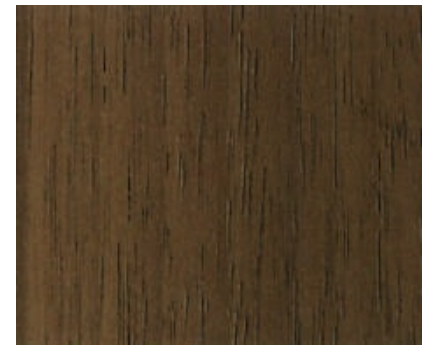
Cherry **SG/SF 31** ●●



Cherry **SG 28** ●



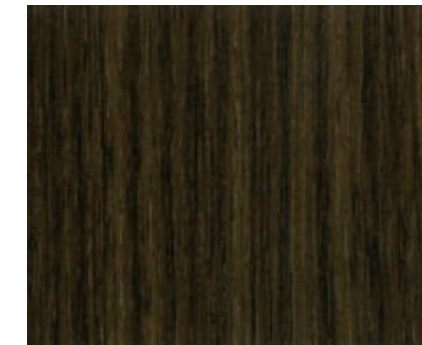
Anegre **SG/SF 1143** ●●



Walnut **SG/SF 89** ●●



Ash **SG /SF 1103** ●●



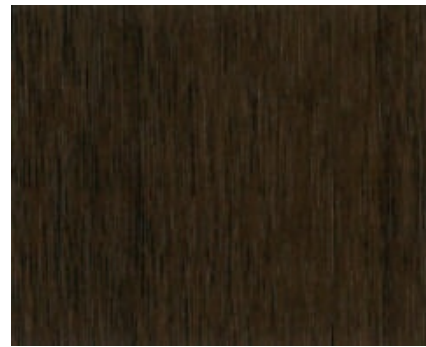
Walnut **SG/SF 149** ●●



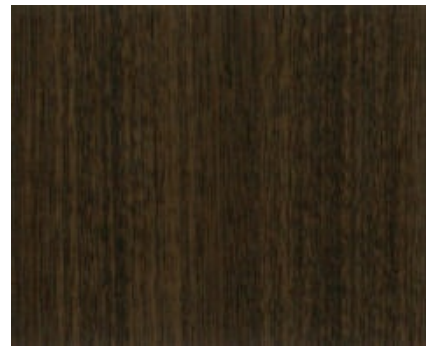
# WOOD

S series

방염 ● | 비방염 ● | 신제품 NEW



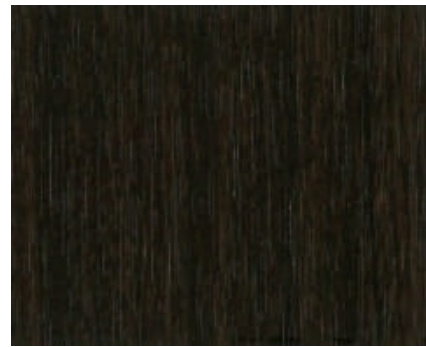
Walnut SG/SF 278 ●●



Sapele SG/SF 243 ●●



Teak SG/SF 36 ●●



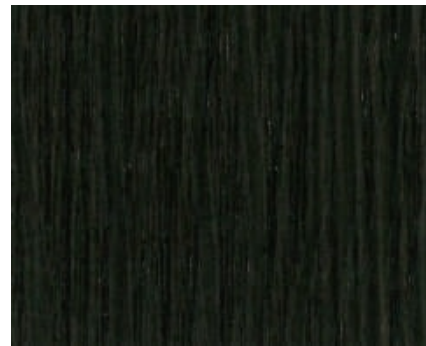
Walnut SG 61 ●



Ash SG/SF 164 ●●



Antique Wood SG 230 ●



Antique Wood SG/SF 1109 ●●



Black Wood SG/SF 52 ●●



SG/SF 243

상기 이미지는 이해를 돕기 위한 연출 이미지로 실제 제품과 다를 수 있습니다.



# VERSA-TILE

Versa-tile's Versa means 'a change', 'an Alteration' or 'another one'.  
You can create a variety of different looks compared to traditional interior films.  
Apply to floors that need maintenance, walls in the kitchen, or art walls.

BG 8007

The images are for illustrative purposes and may differ from actual product.

## VERSA-TILE

방영 ● | 비방영 ● | 신제품 NEW

Versa-tile은 기존 인테리어 필름의 두께 변경과 바닥재 기능성 추가로 유지 보수가 필요한 바닥, 주방의 벽면 또는 아트월 등 다양한 표현이 필요한 부분에 적용할 수 있도록 제작된 상품입니다.



Carrara

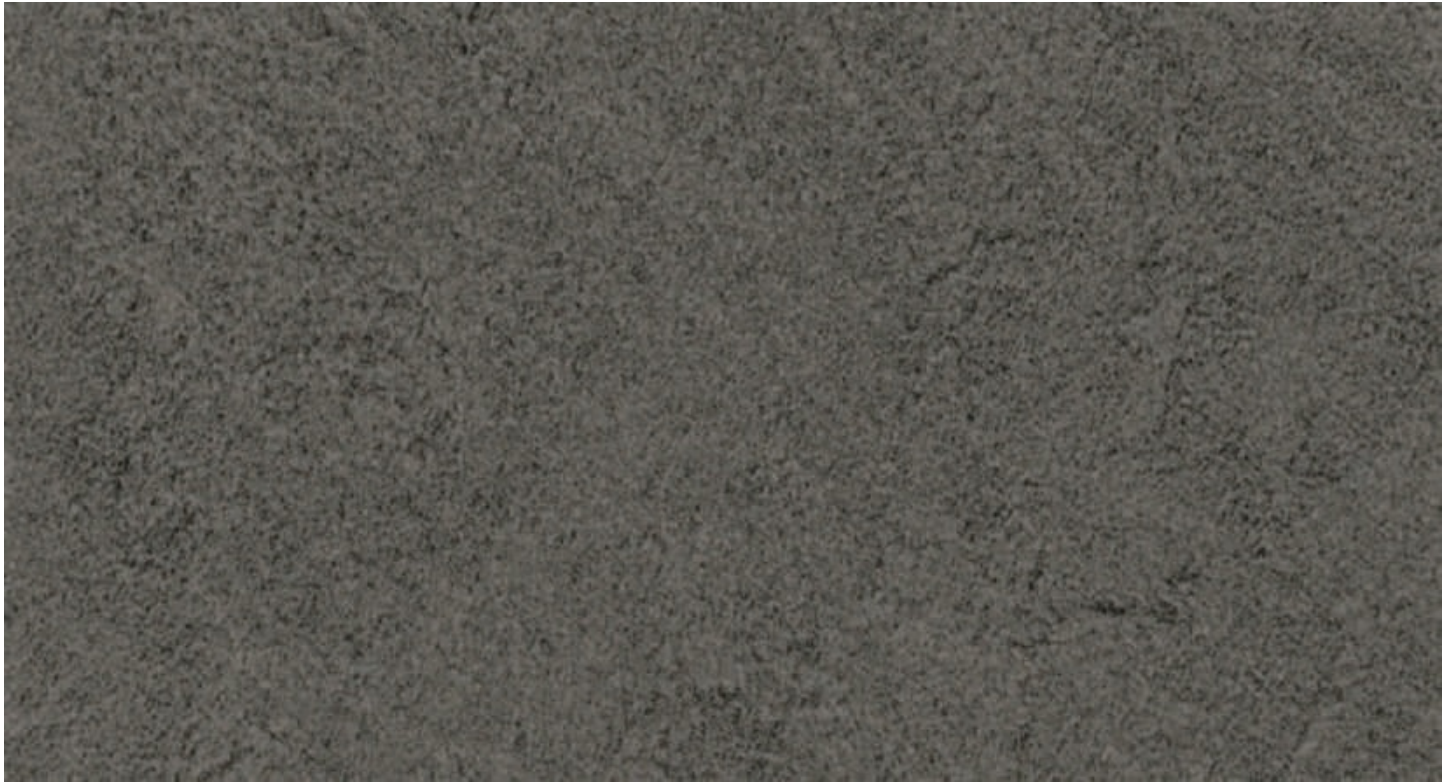
NEW BG 8006 ●



Marquina

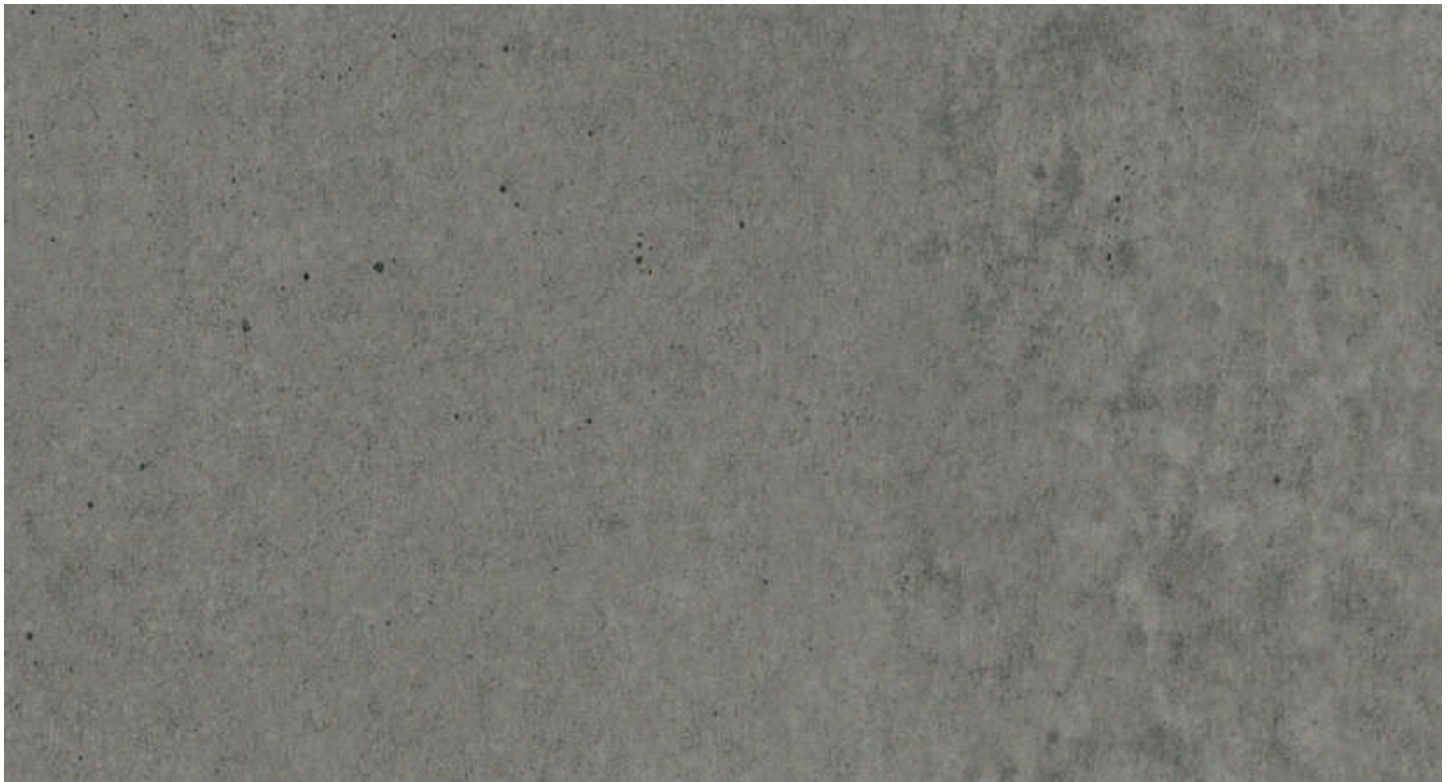
NEW BG 8007 ●





Travertine

BG 8004 ●



Concrete

BG 8003 ●